

# NO. 9 UNIVERSAL BUTTON PUNCH

## Instructions and Parts List

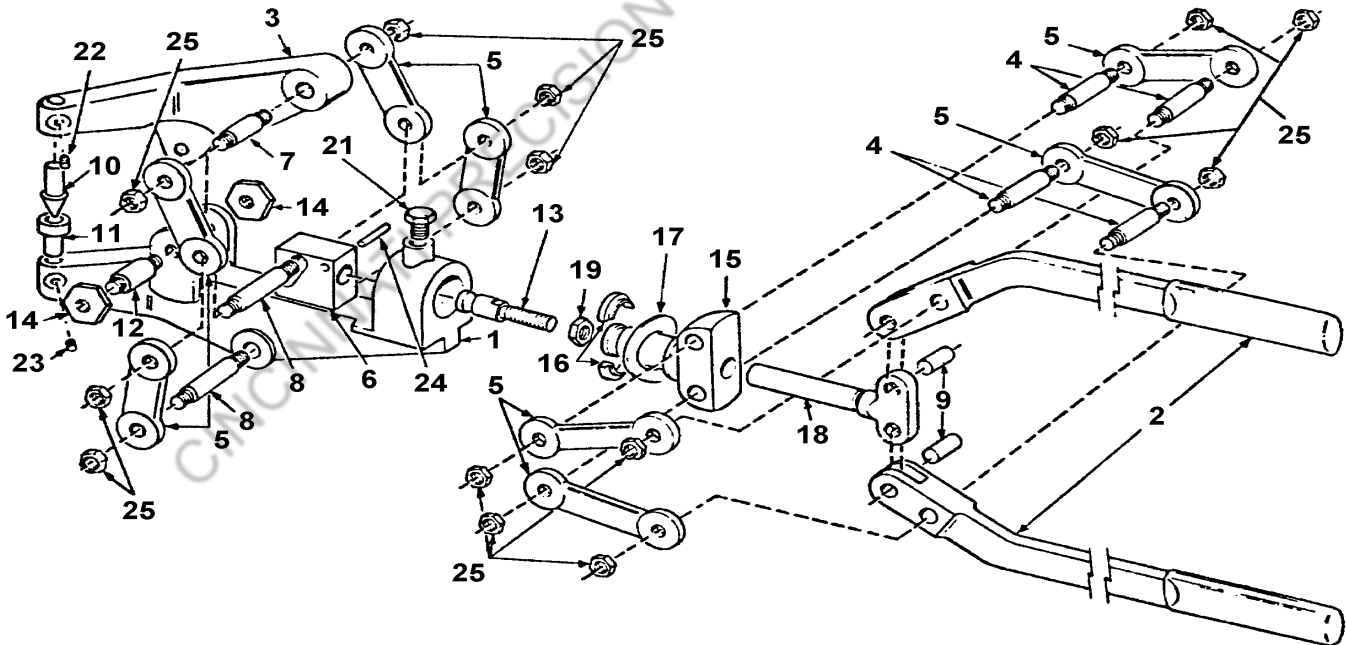
### SPECIFICATIONS

	NO. 9
Throat Depth	1 3/4" (44.45 MM)
Throat Height	5/8" (15.88 MM)
Length	26" (660.4 MM)
Capacity	3 x 20 GA.



**CARE:** An optional oiling of all moving parts is all the care necessary.

**OPERATION:** Tool is adjusted for three thicknesses of 20 gauge metal when shipped. When used on different thickness of metal, punch penetration of die must be adjusted by loosening check nut (item 19) on spindle to block adjusting stud and turning spindle to block adjusting stud; in to open jaws and out to close jaws. Be sure and tighten check nut when adjustment has been completed. If punch does not penetrate die far enough, dimple will not be deep enough; if too much penetration is present, the metal will tear.



**ROPER WHITNEY OF ROCKFORD, INC.**

2833 HUFFMAN BLVD., ROCKFORD, ILLINOIS 61103-3990 \* 815/962-3011 \* FAX 815/962-2227

Website: [www.roperswhitney.com](http://www.roperswhitney.com) \* Email: [info@roperswhitney.com](mailto:info@roperswhitney.com)

# NO. 9 UNIVERSAL BUTTON PUNCH

## Parts List

ITEM NO.	PART NO.	PART NAME	QTY.
1	730020113	Lower Jaw	1
2	238040001	Handle	2
3	730020115	Upper Jaw	1
4	730160116	Handle Link Bolt	4
5	730240117	Side Link	8
6	730130118	Spindle Support Block	1
7	730160119	Upper Jaw Link Bolt	1
8	730160120	Lower Jaw Link Bolt	2
9	630255200	Handle & Spindle Pin	2
10	730850144	Punch	1
11	730850145	Die	1
12	730160122	King Bolt	1
13	730160123	Adjusting Stud	1
14	730160042	King Bolt Nut	2
15	730770124	Spindle Sleeve Spool	1
16	730260125	Retaining Collar	1
17	730790126	Retaining Spring Washer	1
18	730770127	Spindle	1
19	652023016	Check Nut	1
21	601012173	Yoke Lock Screw, 3/8-16 x 3/4	1
22	600325903	Punch Set Screw, 1/4-20 x 1/4	1
23	600325903	Die Screw Set, 1/4-20 x 1/4	1
24	600063452	Roll Pin, 3/16 x 5/8	1
25	652023058	Handle Link Bolt Nut, 5/16-24	14

When ordering, list Item No. and Part Name.