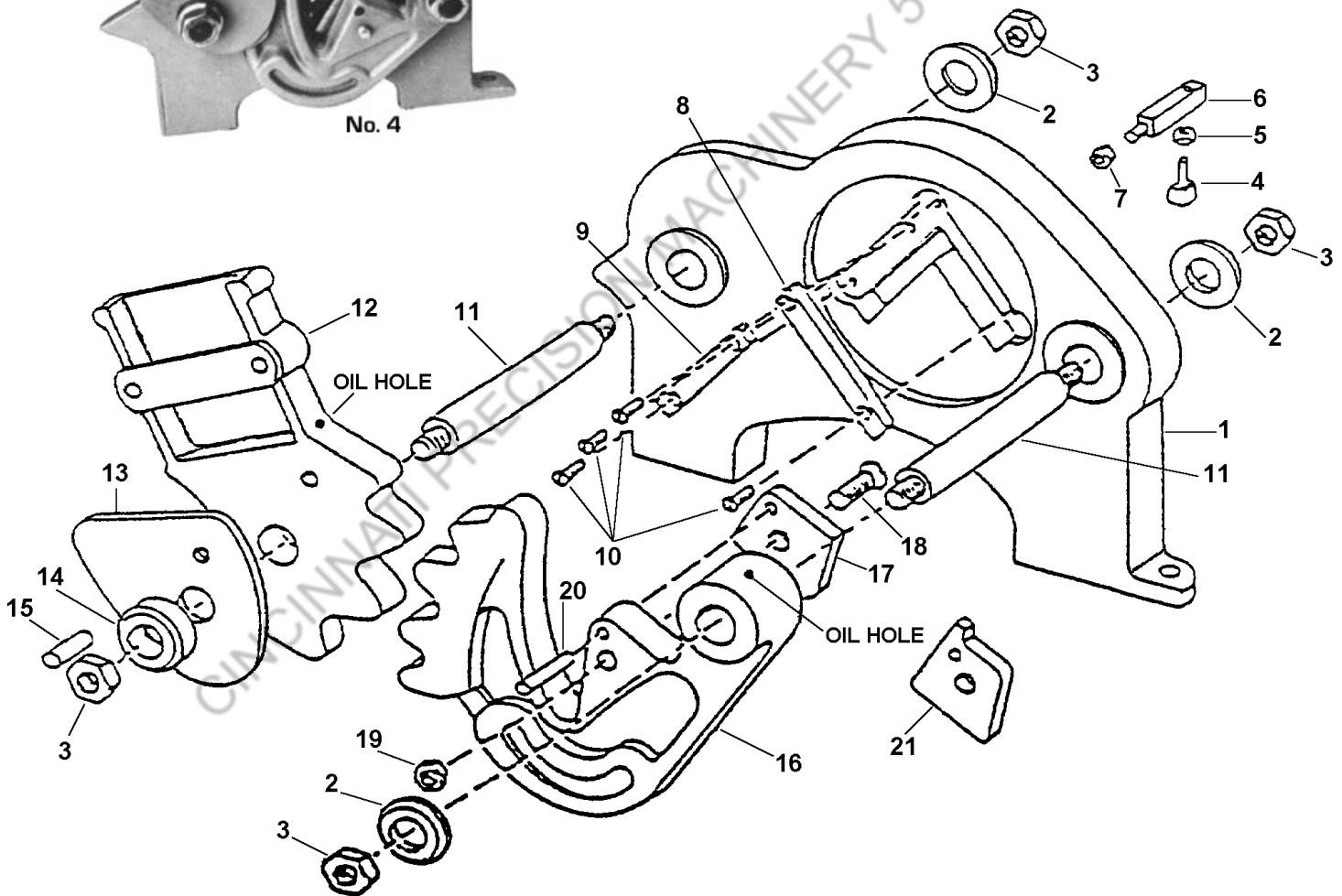
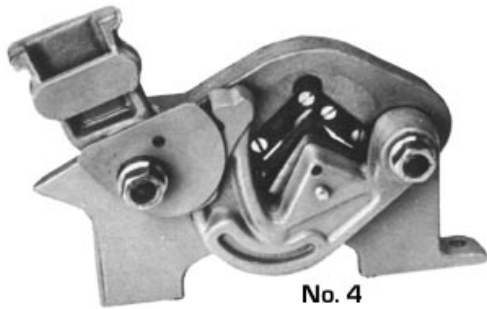
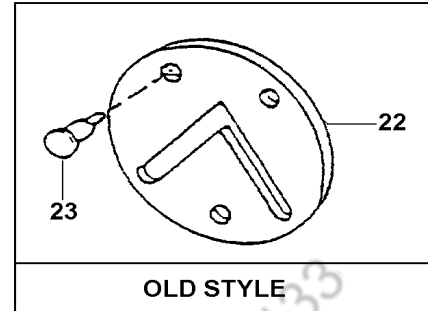


NO. 4 ANGLE IRON SHEAR

Instructions and parts list

CARE: A heavy gear lubricant should be applied to the gear teeth, Movable Shear Arm and Operating Handle. Light machine oil should be placed in oil holes provided in Movable Shear Arm and Operating Handle. All bolts and nuts should be checked occasionally to insure their being tight. Long Die Segment and Short Die Segment have four cutting edges and may be rotated. Support Stud Adjusting Screw may require adjustment to insure angle being level with Die Segments.



ROPER WHITNEY OF ROCKFORD, INC.

2833 HUFFMAN BLVD., ROCKFORD, ILLINOIS 61103-3990 * 815/962-3011 * FAX 815/962-2227

Website: www.roperwhitney.com * Email: info@roperwhitney.com

NO. 4 ANGLE IRON SHEAR

Parts List

ITEM NO.	PART NO.	PART NAME	QTY.
1	740060015	Base	1
2	740830019	Hinge Bolt Washer	3
3	600023053	Hinge Bolt Nut, 3/4-16 Jam	4
4	633012279	Support Stud Adj. Screw, 1/2-13 x 2" Sq. Hd.	1
5	649023007	Support Stud Adj. Screw Nut, 1/2-13 Hex Jam	1
6	740160020	Work Support Stud	1
7	649023010	Support Stud Nut, 3/4 x 10 Hex Jam	1
8A	250004150	Die Segment Set	Set
8	740120021	Long Die Segment	1
9	740120022	Short Die Segment	1
10	613012089	Die Mounting Screws, 1/4-20 x 3/4 Flat Head	4
11	740160018	Hinge Bolt	2
12	740670017	Operating Handle	1
13	740060026	Gear Flange Support	1
14	740830025	Hinge Bolt Washer	1
15	600063477	Gear Flange Support Pin, 5/16 x 1" Roll Pin	1
16	740030016	Movable Shear Arm	1
17	350004070	Movable Shear Blade	1
18	613012179	Shear Blade Screw 3/8 - 16 x 1 1/2 Flat Head	1
19	649023005	Movable Shear Blade Screw Nut, 3/8-16 Hex Jam	1
20	600063477	Shear Blade Pin, 5/16 x 1" Roll Pin	1
21	350004025	Movable Blade for 2 x 2 x 1/8 Angle	1
22	350004060	Base Shearing Die (Old Style)	1
23	740650057	Base Shearing Die Screws (Old Style)	3
24	740460027	72" Bar Handle (Not Shown)	1

When ordering, list part number and part name.