

NO. 8 ROLLER BEARING PUNCH

Instructions and Parts List

When ordering, list Item No., Part No., and Part Name

CARE: Oil at hinge points, the punch guide hole in the lower handle, and the punch point. This is all the care necessary.

FOR MAXIMUM OPERATOR SAFETY DO:

1. Read and understand this manual.
2. Use only No. 8 punches and dies marked with a W or R-W designed for this tool.
3. Be sure you punch within the 5 ton capacity of this tool. Type and thickness of material versus final hole size will give you this tonnage.
4. Wear safety glasses.

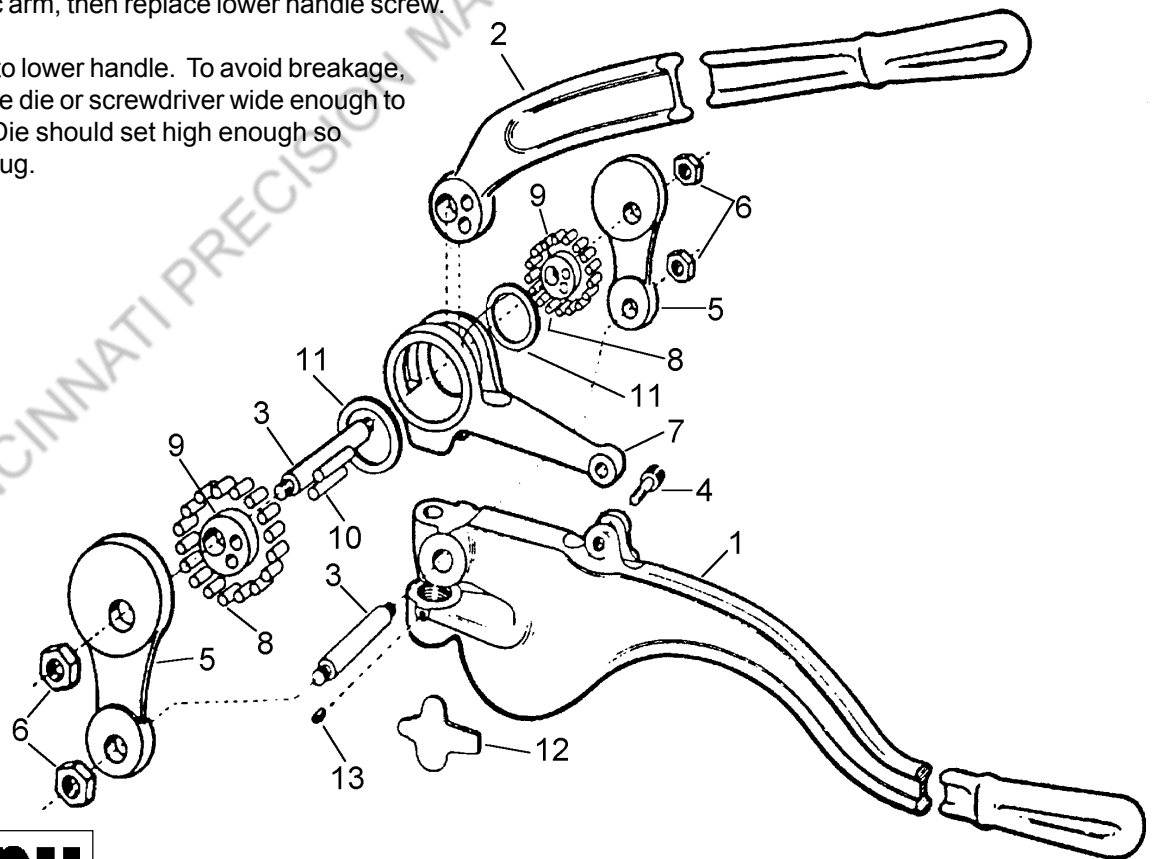
FOR MAXIMUM OPERATOR SAFETY DO NOT:

1. Use punches and dies that are chipped or dulled.
2. Punch over capacity of this tool.
3. Nibble. Punch a full hole not a half hole as punch may contact die.

OPERATION: To change punches, remove the lower handle screw (4) and pull upper handle assembly back to release punch from eccentric arm slot. Lift punch from guide hole. Put new punch in guide hole and move eccentric arm forward until punch slot is engaged in eccentric arm, then replace lower handle screw.

Dies are threaded into lower handle. To avoid breakage, use die key to remove die or screwdriver wide enough to engage both slots. Die should set high enough so punch can remove slug.

ITEM NO.	PART NO.	PART NAME	NO. REQ'D.
1	730460050	Lower Handle	1
2	730460051	Upper Handle	1
3	730160052	Bolt	2
4	730650053	Handle Screw	1
5	730240054	Side Link	2
6	730560055	Nut, Eccentric Bolt	4
7	730030056	Arm, Eccentric	1
8	600255201	Roller Bearing	34
9	730210057	Cam, Eccentric	2
10	600053332	Pin, Dowel	2
11	730260058	Roller Retainer	2
12	730480009	Key, Die Adjusting	1
13	600325903	Set Screw	1



ROPER WHITNEY OF ROCKFORD, INC.

2833 HUFFMAN BLVD., ROCKFORD, ILLINOIS 61103-3990 * 815/962-3011 * FAX 815/962-2227

Website: www.roperswhitney.com * Email: info@roperswhitney.com

REVERSING OF NO. 8 HANDLE

1. Remove side link.
2. Remove bearings and retainer.
3. Remove side link bolt and other side link.
4. Remove bearings and retainer.
5. Remove cam pins and cams.
6. Remove upper handle from eccentric arm.
7. Reverse upper handle - replace in eccentric arm.
8. Replace cams and cam pins.
9. Replace bearing retainer in one side, then replace bearings.
10. Replace side link with narrow side of link forward.
11. Replace side link bolt through side link and cams.
12. Turn tool over and repeat process of replacing bearings and link.
13. Replace side link bolt nut and tighten to fit and prick punch so nuts will not move.



ROPER WHITNEY OF ROCKFORD, INC.

2833 HUFFMAN BLVD., ROCKFORD, ILLINOIS 61103-3990 * 815/962-3011 * FAX 815/962-2227

Website: www.roperswhitney.com * Email: info@roperswhitney.com