

# **SHEAR**

**MODEL: 10M14**

**PARTS MANUAL**

ROPER WHITNEY OF ROCKFORD  
2833 HUFFMAN BLVD  
ROCKFORD, IL 61103  
815-962-3011

[www.roperwhitney.com](http://www.roperwhitney.com)

CINCINNATI PRECISION MACHINERY 513-860-4133

# 10M14 SHEAR

## TABLE OF CONTENTS:

SECTION 1.....[BASIC MECHANICAL](#)

SECTION 2.....[ELECTRICAL AND CONTROLS](#)

SECTION 3.....[BACKGAUGE AND MATERIAL RETURN](#)

CINCINNATI PRECISION MACHINERY 513-860-4133

SECTION 1:

# **BASIC MECHANICAL**

CINCINNATI PRECISION MACHINERY 513-860-4133

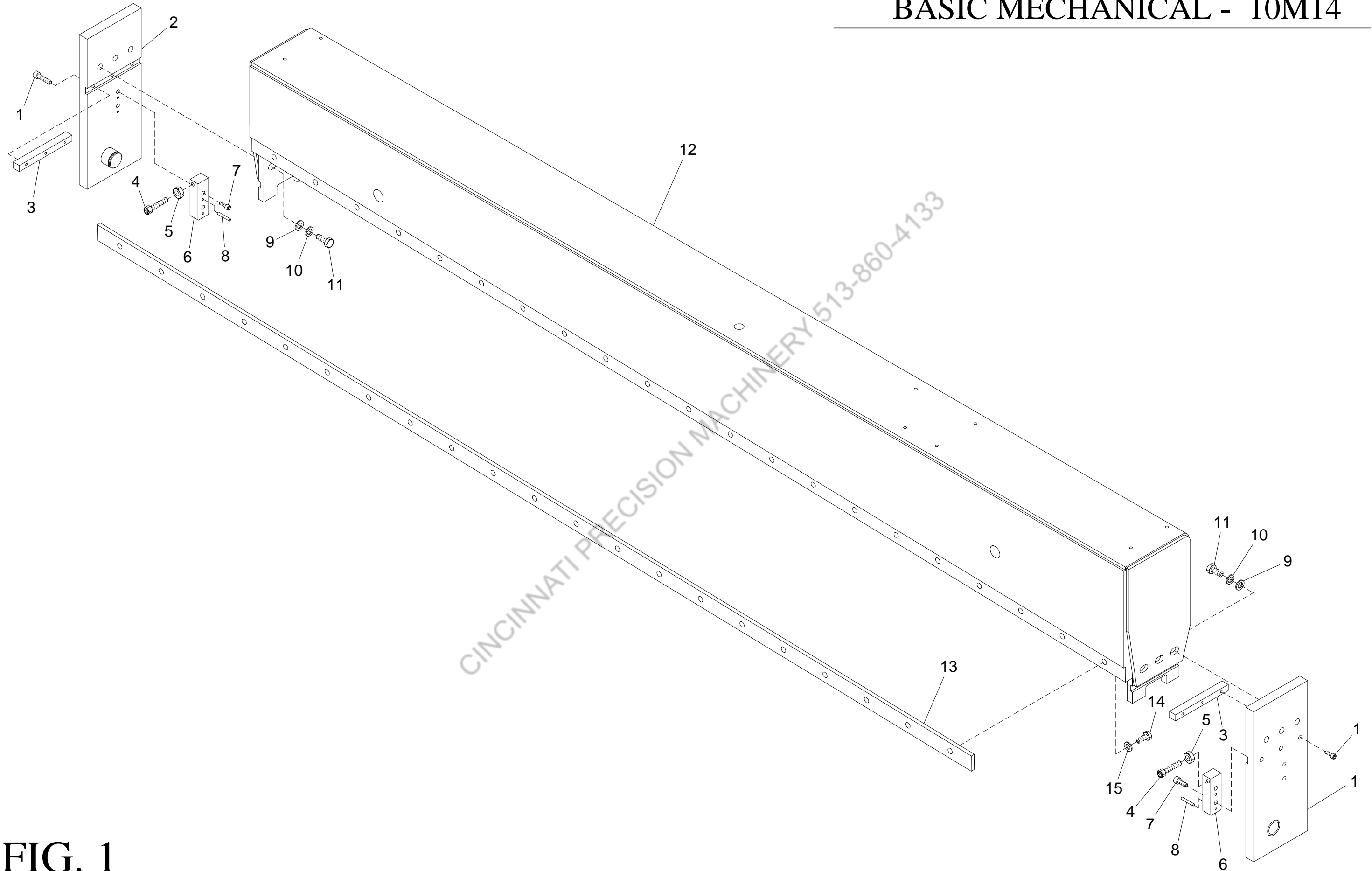


FIG. 1

## RAM

ITEM	QTY	RW PART #	RW PART DESCRIPTION	ITEM	QTY	RW PART #	RW PART DESCRIPTION
1	6	611012133	5/16 X 1 SHC SCREW	9	6	678033110	3/4 FLAT WASHER
2	1	773000170	LH GIB PLATE	10	6	679033110	3/4 LOCK WASHER
3	2	773530176	KEY	11	6	603012416	3/4-10 X 2-1/2 HEX HEAD CAP SCREW
4	2	773650180	ADJUSTMENT SCREW	12	1	773610196	RAM
5	2	652023007	1/2-20 JAM HEX NUT	13	1	350700273	UPPER/LOWER HC BLADE
6	2	773180177	BLADE ADJUSTMENT BLOCK	14	21	602012277	1/2-20 X 1-3/4 HHC SCREW
7	4	611012275	1/2-13 x 1-1/2 SHC SET SCREW	15	21	679033107	1/2 LOCK WASHER
8	4	600063473	1/4 X 2 ROLL PIN	16	1	773000169	RH GIB PLATE

CINCINNATI PRECISION MACHINERY 513-250-4235

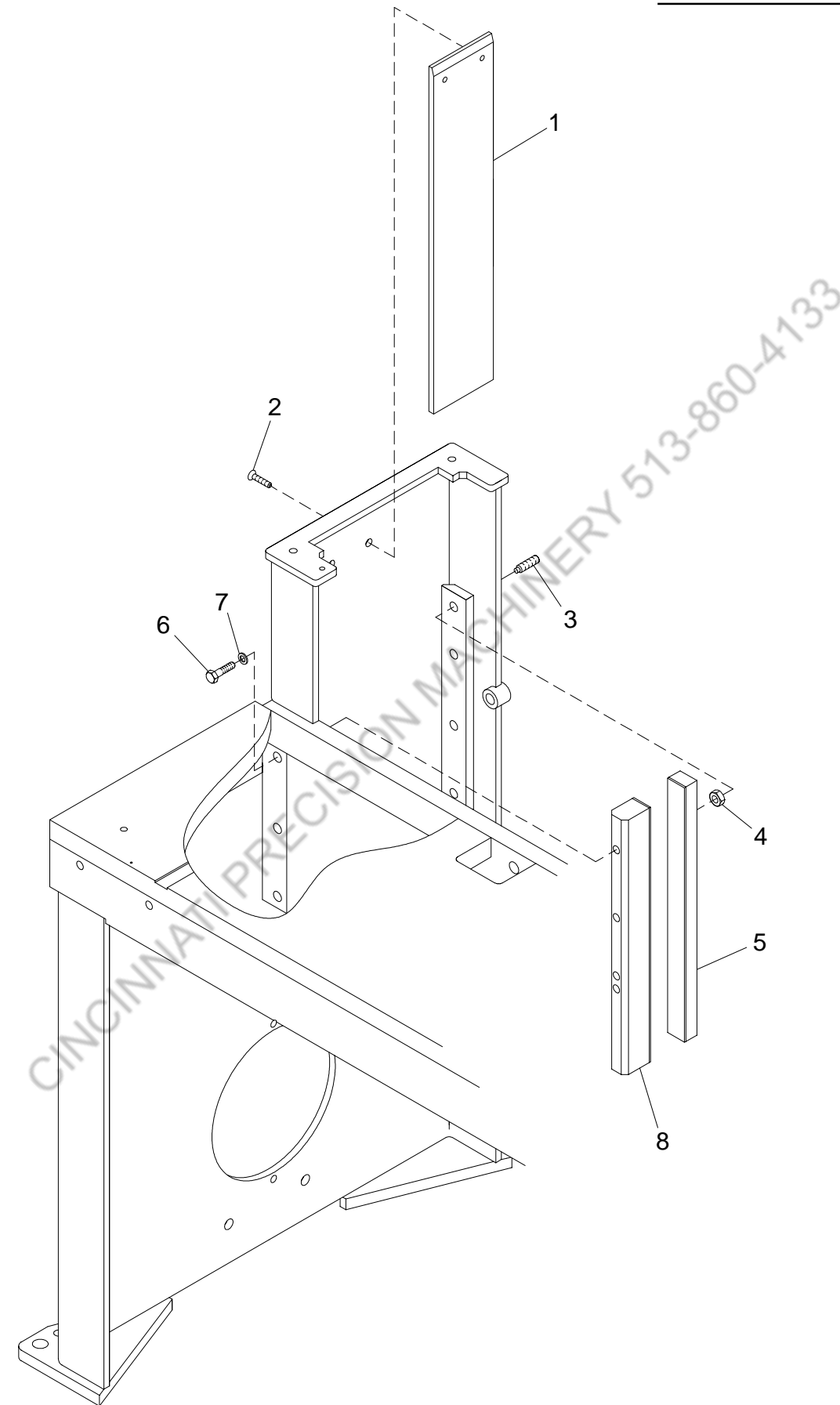


FIG. 2

## RAM GUIDE

ITEM	QTY	RW PART #	RW PART DESCRIPTION
1	2	773000175	RAM END BEARING
2	4	613012173	3/8-16 X 3/4 SHF SCREW
3	8	690012660	1/2-20 X 2 FULL DOG POINT SHS SCREW
4	8	652023007	1/2-20 JAM HEX NUT
5	2	773400174	ADJUSTABLE GIB ASSEMBLY
6	6	601012275	1/2-13 X 1-1/2 HHC SCREW
7	6	679033107	1/2 LOCK WASHER
8	2	773400173	FIXED GIB ASSEMBLY

CINCINNATI PRECISION MACHINERY 513-550-4133

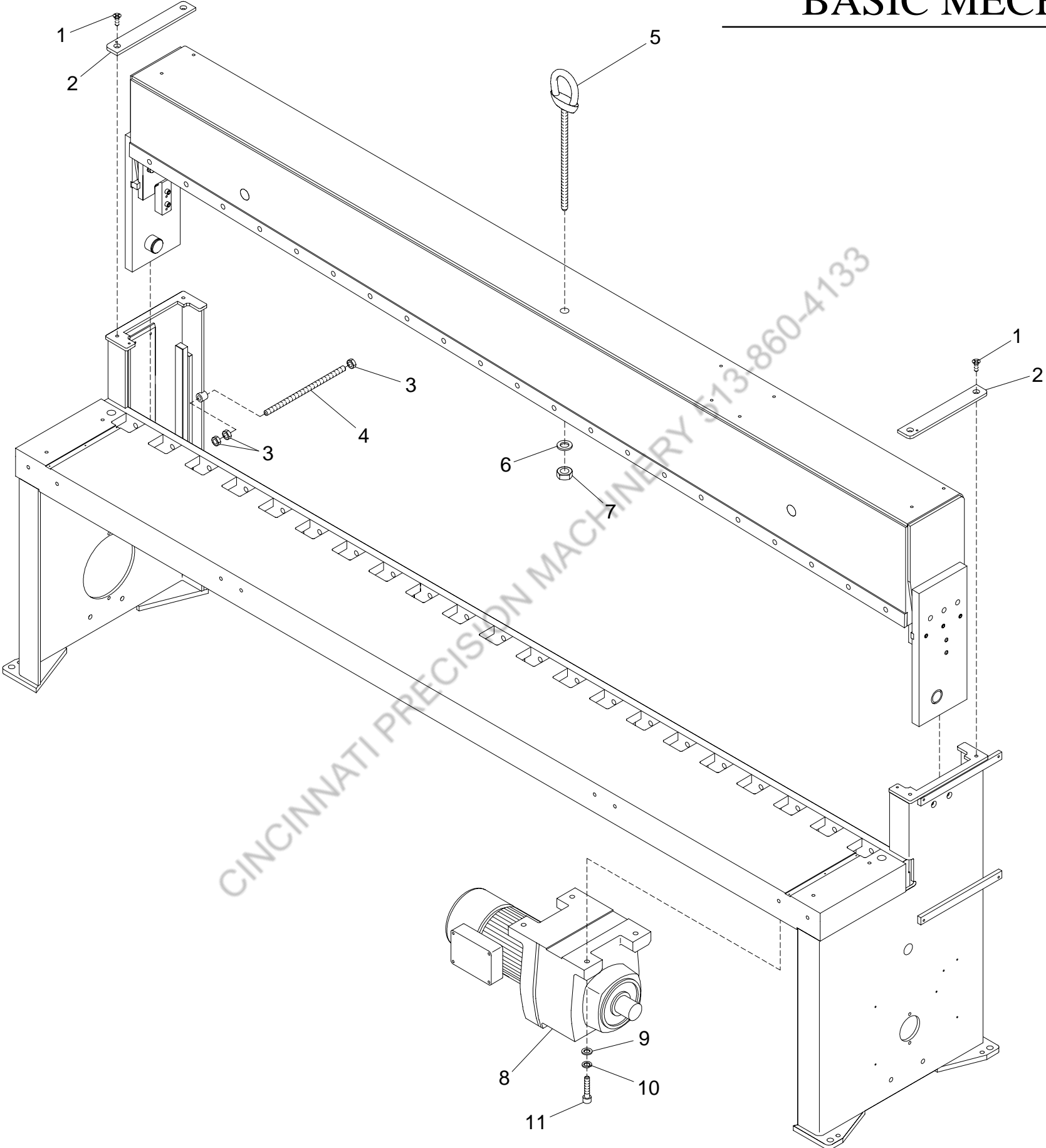


FIG. 3



## RAM AND LEG

ITEM	QTY	RW PART #	RW PART DESCRIPTION
1	4	613012172	3/8-16 X 5/8 FLAT HEAD CAP SCREW
2	2	773180178	LEG TIE BAR
3	6	645023007	1/2-20 FULL HEX NUT
4	2	773030106	THREADED ROD
5	1	773000227	EYEBOLT ASSEMBLY
6	1	679033111	7/8-9 LOCK WASHER
7	1	643023011	7/8-9 HEX NUT
8	1	660011214	GEAR BRAKE MOTOR
9	4	678033109	5/8 FLAT WASHER
10	4	679033109	5/8 LOCK WASHER
11	4	601012376	5/8-11 X 3-1/4 HHC SCREW

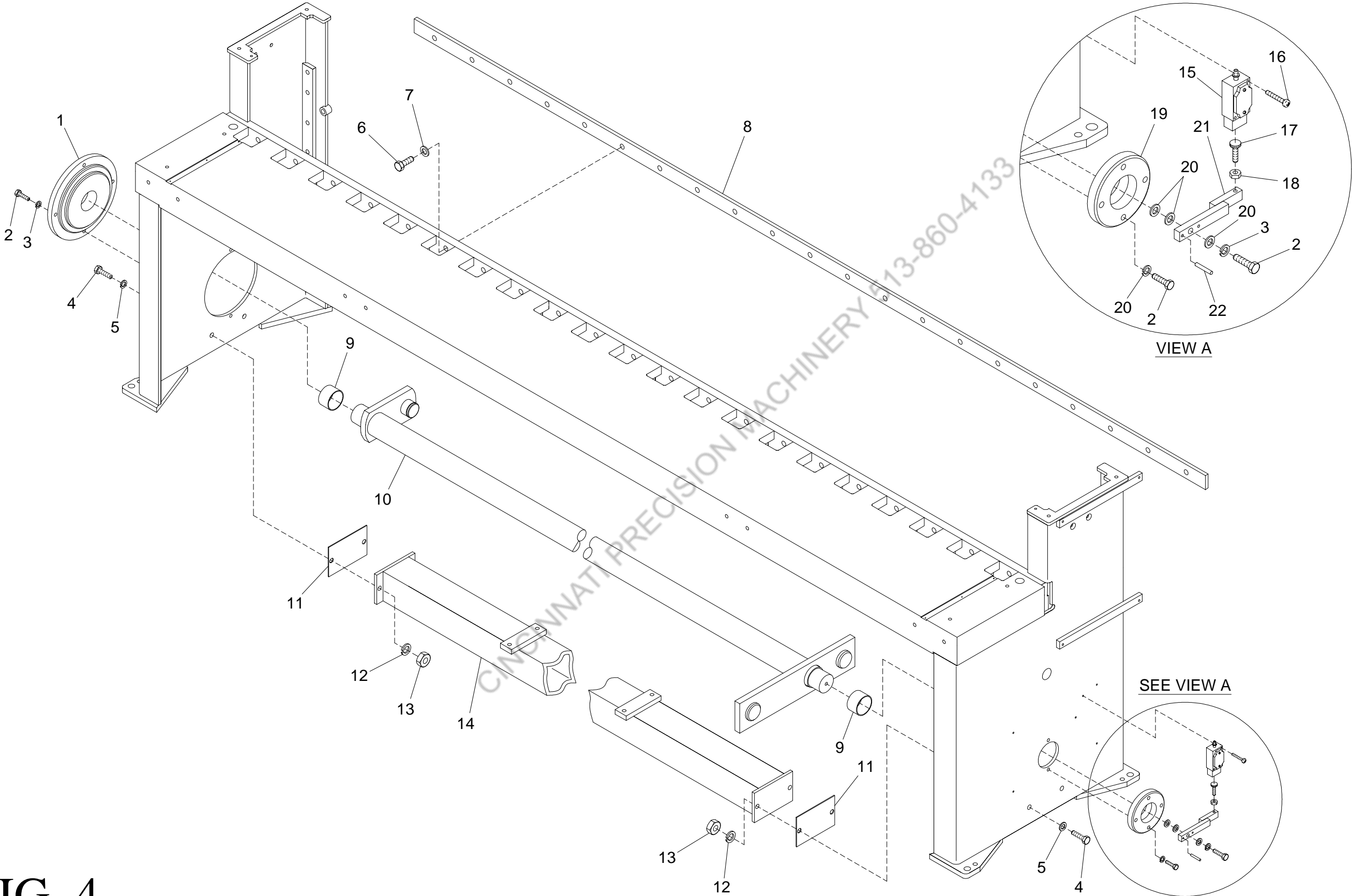


FIG. 4

## DRIVESHAFT

ITEM	QTY	RW PART #	RW PART DESCRIPTION	ITEM	QTY	RW PART #	RW PART DESCRIPTION
1	1	773060046	LARGE BEARING PLATE	12	4	679033107	1/2 LOCK WASHER
2	5	601012175	3/8-16 X 1 HHC SCREW	13	4	643023007	1/2-13 FULL HEX NUT
3	5	679033105	3/8 LOCK WASHER	14	1	773820036	STIFFENER TUBE
4	4	601012275	1/2-13 X 1-1/2 HHC SCREW	15	1	660152638	A.B. LIMIT SWITCH
5	4	678033107	1/2 FLAT WASHER	16	2	611012065	#10-24 X 2-1/4 SHC SCREW
6	21	602012277	1/2-20 X 1-3/4 HHCS SCREW	17	1	673012659	SCREW CLAMP #AHS312A VLIER
7	21	679033107	1/2 LOCK WASHER	18	1	643023004	5/16-18 FULL HEX NUT
8	1	350700273	UPPER/LOWER HC BLADE	19	1	773060045	SMALL BEARING PLATE
9	2	773080083	SLEEVE BEARING	20	3	678033105	3/8 FLAT WASHER
10	1	773000035	ACTUATOR SHAFT ASSEMBLY	21	1	773200063	LIMIT SWITCH BRACKET
11	2	773720085	SHIM (AS REQUIRED)	22	2	600063455	3/16 X 1 ROLL PIN

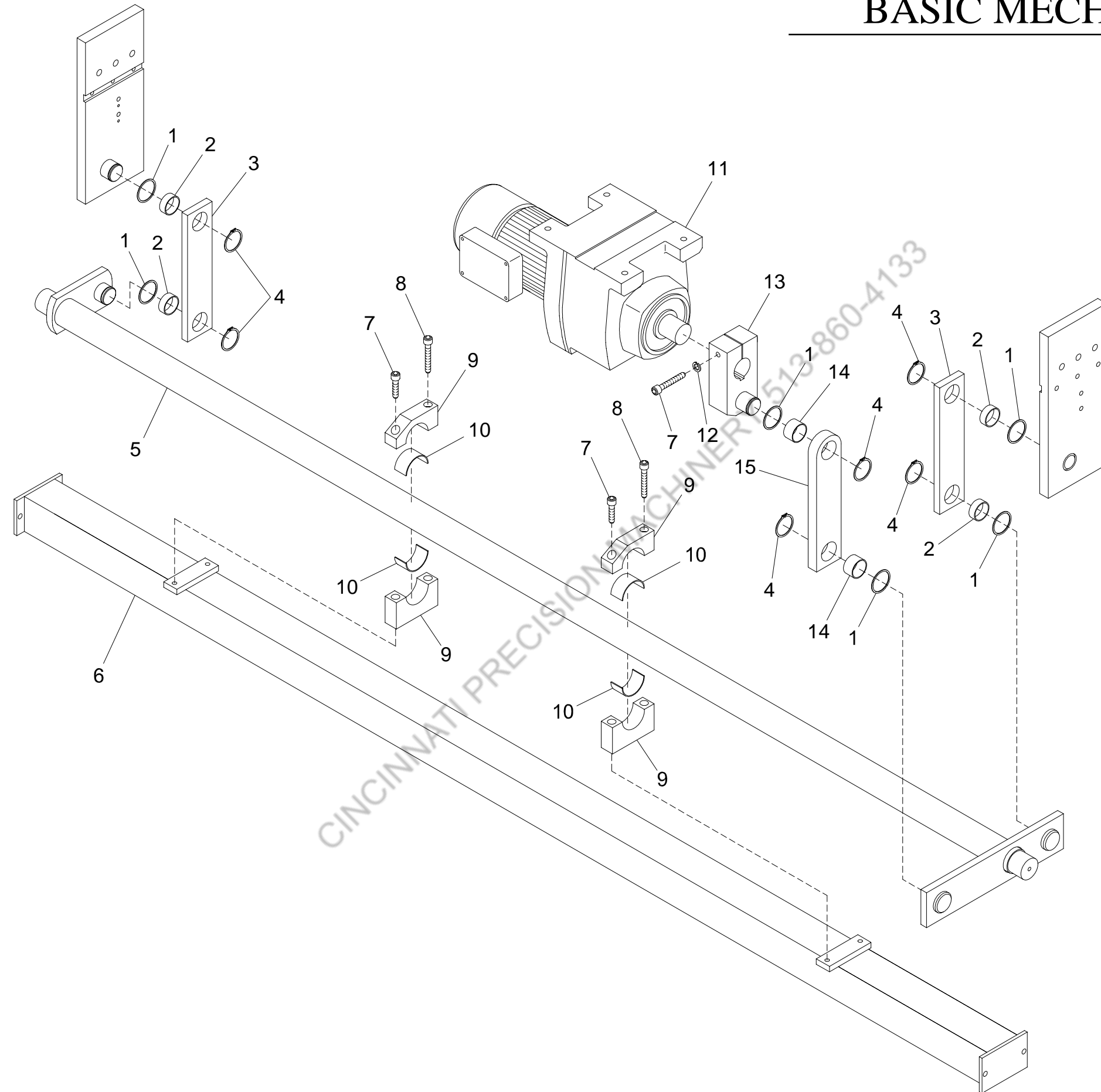


FIG. 5

## DRIVESHAFT

ITEM	QTY	RW PART #	RW PART DESCRIPTION	ITEM	QTY	RW PART #	RW PART DESCRIPTION
1	6	773630080	SPACER	9	2	773130039	BEARING BLOCK
2	4	773080081	SLEEVE BEARING	10	2	773080110	SLEEVE BEARING
3	2	773030043	ACTUATOR TO RAM LINK	11	1	660011214	GEAR BRAKE MOTOR
4	6	600164316	RETAINING RING (#5100-175)	12	1	679033107	1/2 LOCK WASHER
5	1	773000035	ACTUATOR SHAFT ASSEMBLY	13	1	773000150	GEARBOX LINK ECCENTRIC ASSEMBLY
6	1	773820036	STIFFENER TUBE	14	2	773080082	SLEEVE BEARING
7	3	611012287	1/2-13 X 4 SHC SCREW	15	1	773030149	GEARBOX DRAG LINK
8	2	611012292	1/2-13 X 5-1/4 SHC SCREW				

CINCINNATI PRECISION MACHINERY

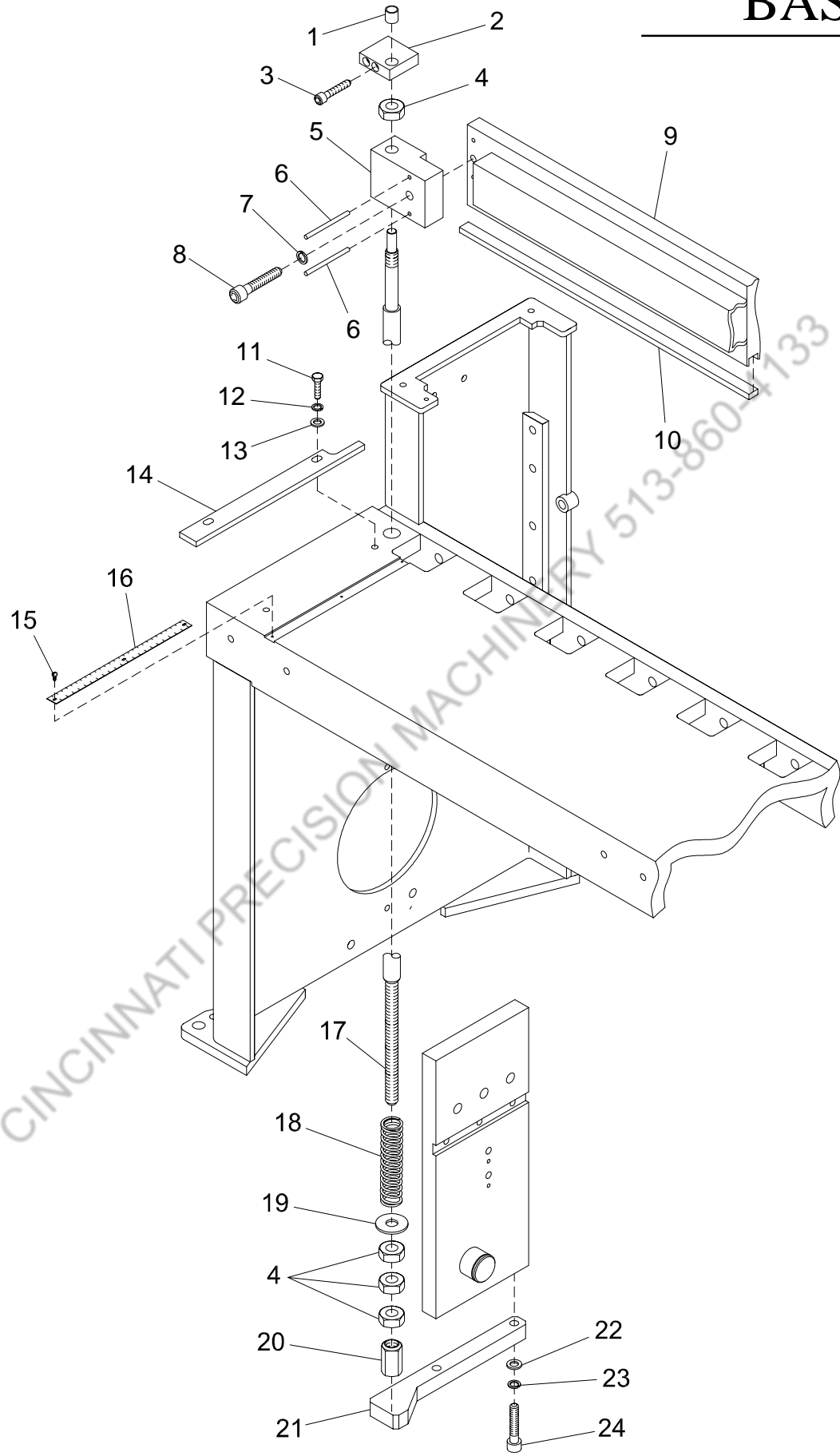


FIG. 6

## BED SIDE ASSEMBLY

ITEM	QTY	RW PART #	RW PART DESCRIPTION	ITEM	QTY	RW PART #	RW PART DESCRIPTION
1	2	673194679	BRONZE BUSHING	13	4	678033105	3/8 FLAT WASHER
2	2	773130049	BUSHING BLOCK	14	2	773030144	BED SQUARING BAR
3	4	611012143	5/16-18 X 2-1/2 SHC SCREW	15	6	607012643	#4-40 X 1/4 PAN HEAD SCREW
4	8	643023010	3/4-10 FULL HEX NUT	16	2	673000425	BED SCALE
5	2	773130048	UPPER HOLD-DOWN GUIDE BLOCK	17	2	773030044	HOLD-DOWN GUIDE SHAFT
6	4	600063473	1/4 X 2 ROLL PIN	18	2	673184615	HELICAL COMPRESSION SPRING
7	2	678033107	1/2 FLAT WASHER	19	2	678033110	3/4 FLAT WASHER
8	2	611012282	1/2-13 X 2-3/4 SHC SCREW	20	2	773560041	HOLD-DOWN ADJUSTMENT NUT
9	1	773010195	HOLD-DOWN BAR	21	2	773030047	HOLD-DOWN RELEASE BAR
10	1	673000431	URETHANE STRIP	22	4	678033107	1/2 FLAT WASHER
11	4	601012177	3/8-16 X 1-1/4 HHC SCREW	23	4	679033107	1/2 LOCK WASHER
12	4	679033105	3/8 LOCK WASHER	24	4	621012277	1/2-13 X 1-3/4 SSC SCREW

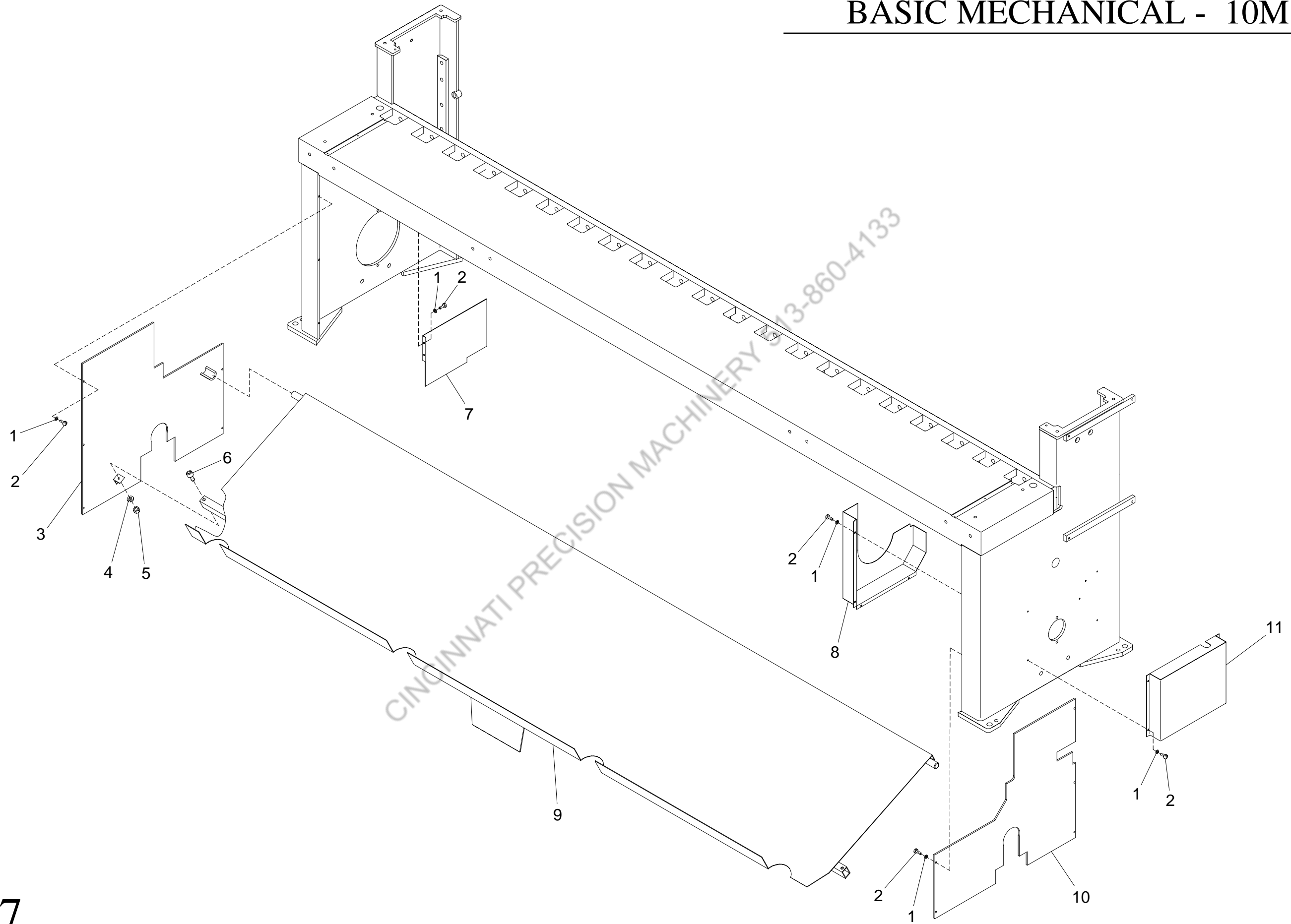


FIG. 7



## GUARDS

ITEM	QTY	RW PART #	RW PART DESCRIPTION
1	22	679033102	#10 LOCK WASHER
2	22	609012053	#10-24 X 5/8 RHM SCREW
3	1	773440197	LEFT LEG GUARD
4	2	679033103	1/4 LOCK WASHER
5	2	643023003	1/4-20 FULL HEX NUT
6	2	611012084	1/4-20 X 3/8 SHC SCREW
7	1	773440198	LEFT LEG GUARD
8	1	773440075	GEAR BOX GUARD
9	1	773380059	MATERIAL RETURN WELDMENT
10	1	773440071	RIGHT LEG GUARD
11	1	773220084	LIMIT SWITCH COVER

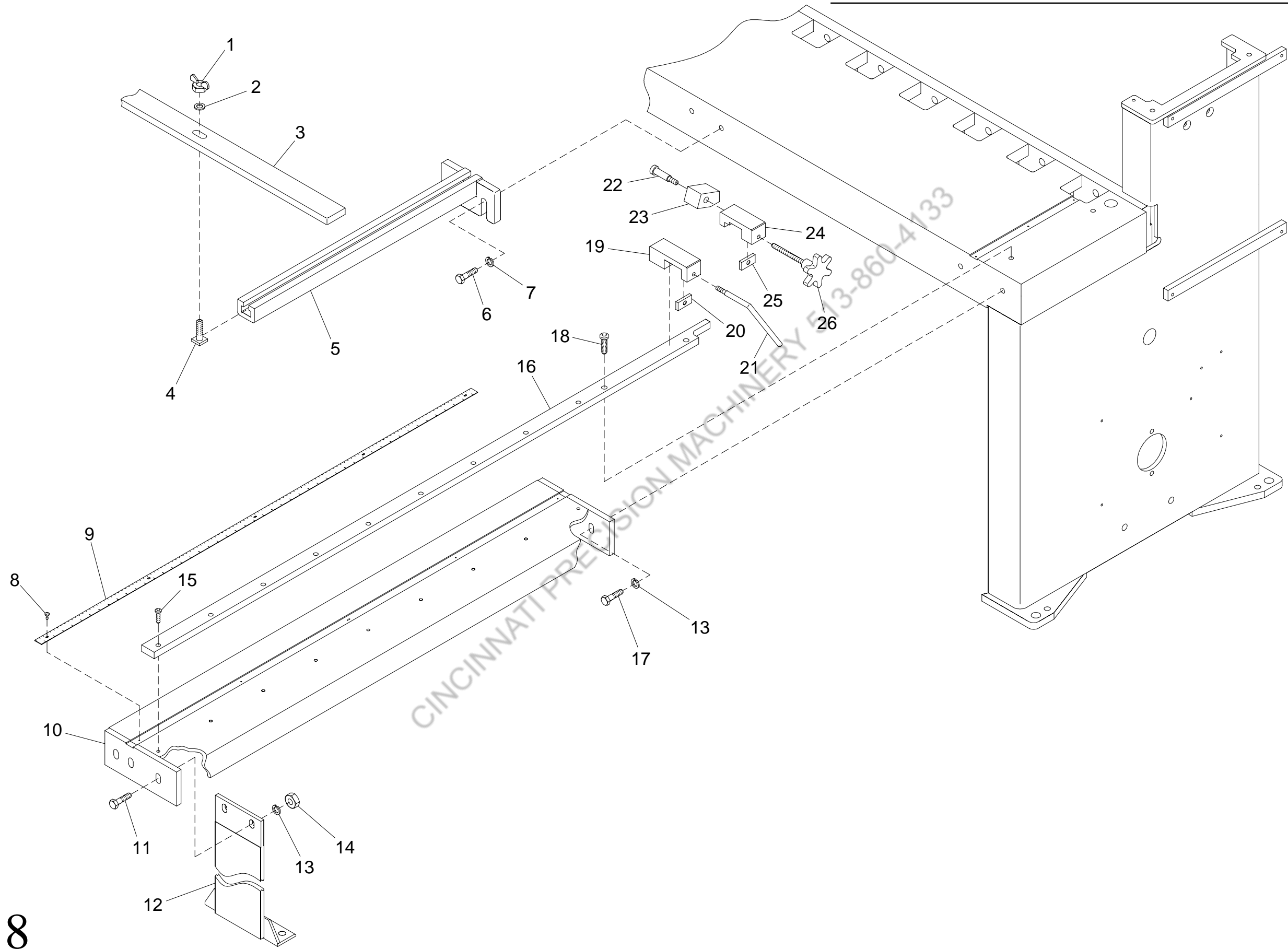


FIG. 8

## FRONT AND SIDE EXTENSIONS

### 273940006 - 25" FRONT EXTENSION

ITEM	QTY	RW PART #	RW PART DESCRIPTION	ITEM	QTY	RW PART #	RW PART DESCRIPTION
1	2	673023007	1/2-13 WING NUT	5	2	762030035	FRONT ARM
2	2	678033107	1/2 FLAT WASHER	6	4	601012225	7/16-14 X 1-1/4 HHC SCREW
3	1	773420020	FRONT GAUGE	7	4	679033106	7/16 LOCK WASHER
4	2	762160036	SQUARE HEAD TEE BOLT				

### 273940042 - SIDE EXTENSION 16"-63"

ITEM	QTY	RW PART #	RW PART DESCRIPTION	ITEM	QTY	RW PART #	RW PART DESCRIPTION
8	5	607012643	#4-40 X 1/4 PAN HEAD SCREW	15	9	615012133	5/16-18 X 1 SHB SCREW
9	1	673000441	SCALE, 16" - 63"	16	1	773420143	GAUGE BAR
10	1	773420202	GAUGE HOLDER	17	2	601012225	7/16-14 X 1-1/4 HEX BOLT
11	2	601012231	7/16-14 X 2 HEX BOLT	18	2	615012175	3/8-16 X 1 SHB SCREW
12	1	773140145	SUPPORT LEG	19	1	773130026	FIXED STOP
13	4	679033106	7/16 LOCKWASHER	20	1	773010025	CLAMP
14	2	643023006	7/16-14 HEX NUT	21	1	773030027	LOCKING LEVER

### 273940046 - OPTIONAL FLIP STOP FOR SIDE EXTENSION

ITEM	QTY	RW PART #	RW PART DESCRIPTION	ITEM	QTY	RW PART #	RW PART DESCRIPTION
22	1	673012370	1/2 DIA X 1-1/2 LG WITH 3/8-16 THD SHOULDER BOLT	25	1	773010025	CLAMP STRIP
23	1	773420214	STOP	26	1	673356351	LOCKING HANDLE
24	1	773420213	GUIDE				

SECTION 2:

# **ELECTRICAL AND CONTROLS**

CINCINNATI PRECISION MACHINERY 513-860-4133

# ELECTRICAL AND CONTROLS - 10M14

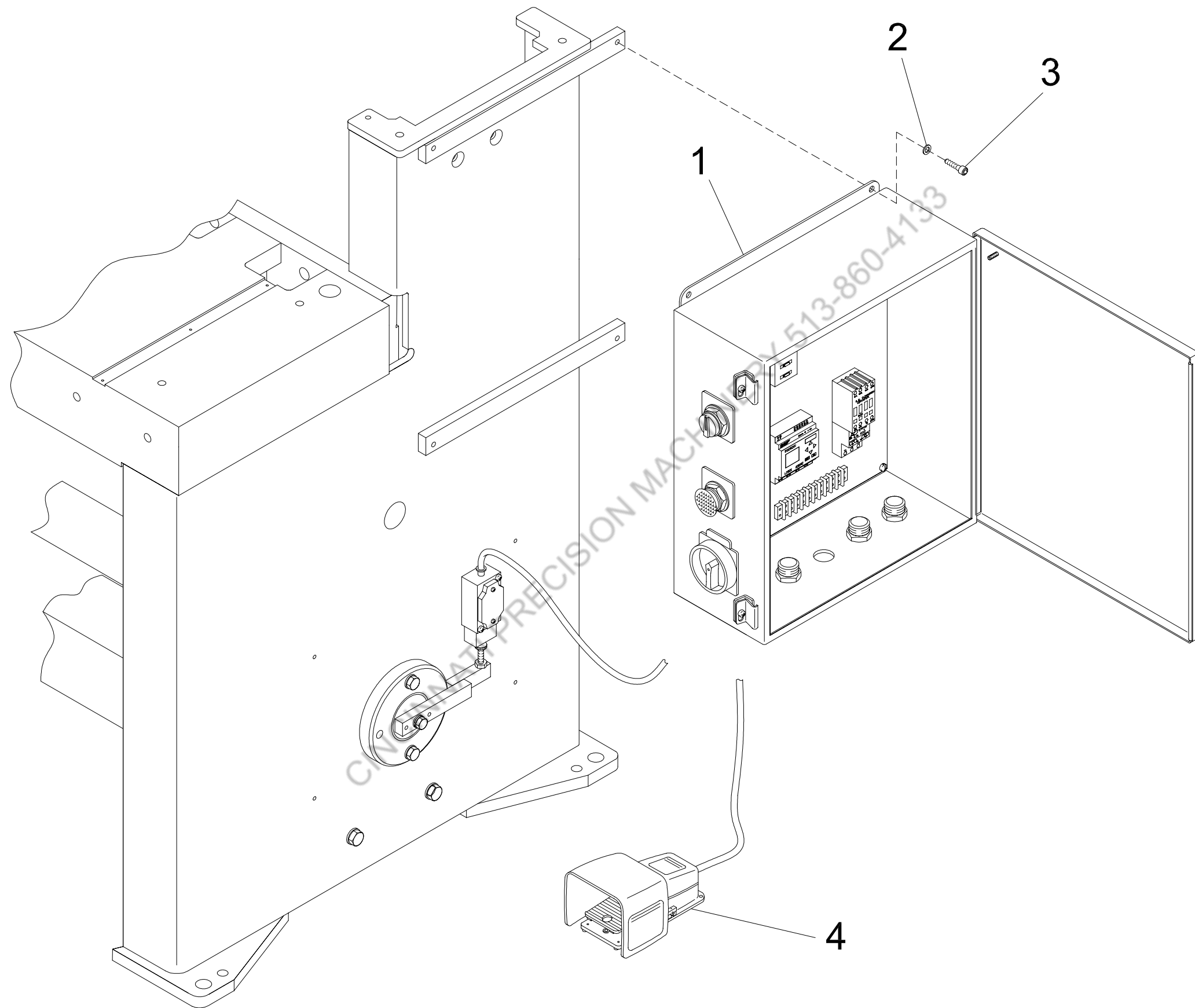


FIG. 1

## FRONT OPERATED PANEL

ITEM	QTY	RW PART #	RW PART DESCRIPTION
1	1	660193190	230V STD PANEL
2	4	679033103	1/4 LOCK WASHER
3	4	611012088	1/4-20 X 5/8 SOC HD CP SCREW
4	1	660092104	FOOT SWITCH (LM #511-BO)

CINCINNATI PRECISION MACHINERY 513-860-4133

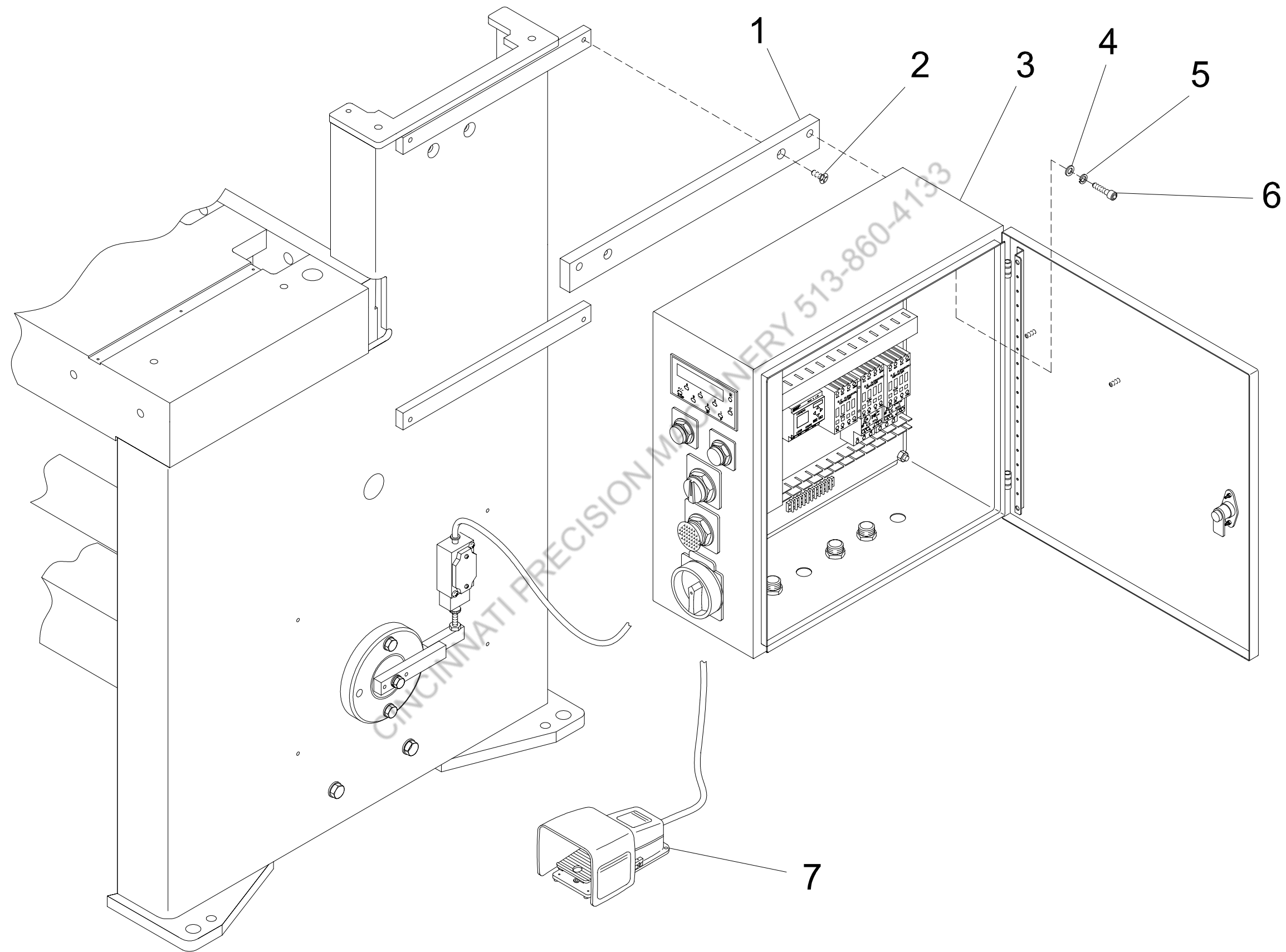


FIG. 2

## DRO PANEL

ITEM	QTY	RW PART #	RW PART DESCRIPTION
1	2	773180216	ELECTRIC PANEL SUPPORT MOUNTING BRACKET
2	4	613012089	1/4-20 X 3/4 SOC HD FLAT SCREW
3	1	660193193	DRO 230V PANEL
4	4	678033103	1/4 FLAT WASHER
5	4	679033103	1/4 LOCK WASHER
6	4	611012130	5/16-18 X 5/8 SOC HD CP SCREW
7	1	660092104	FOOT SWITCH (LM #511-BO)

CINCINNATI PRECISION MACHINERY 513-660-4133



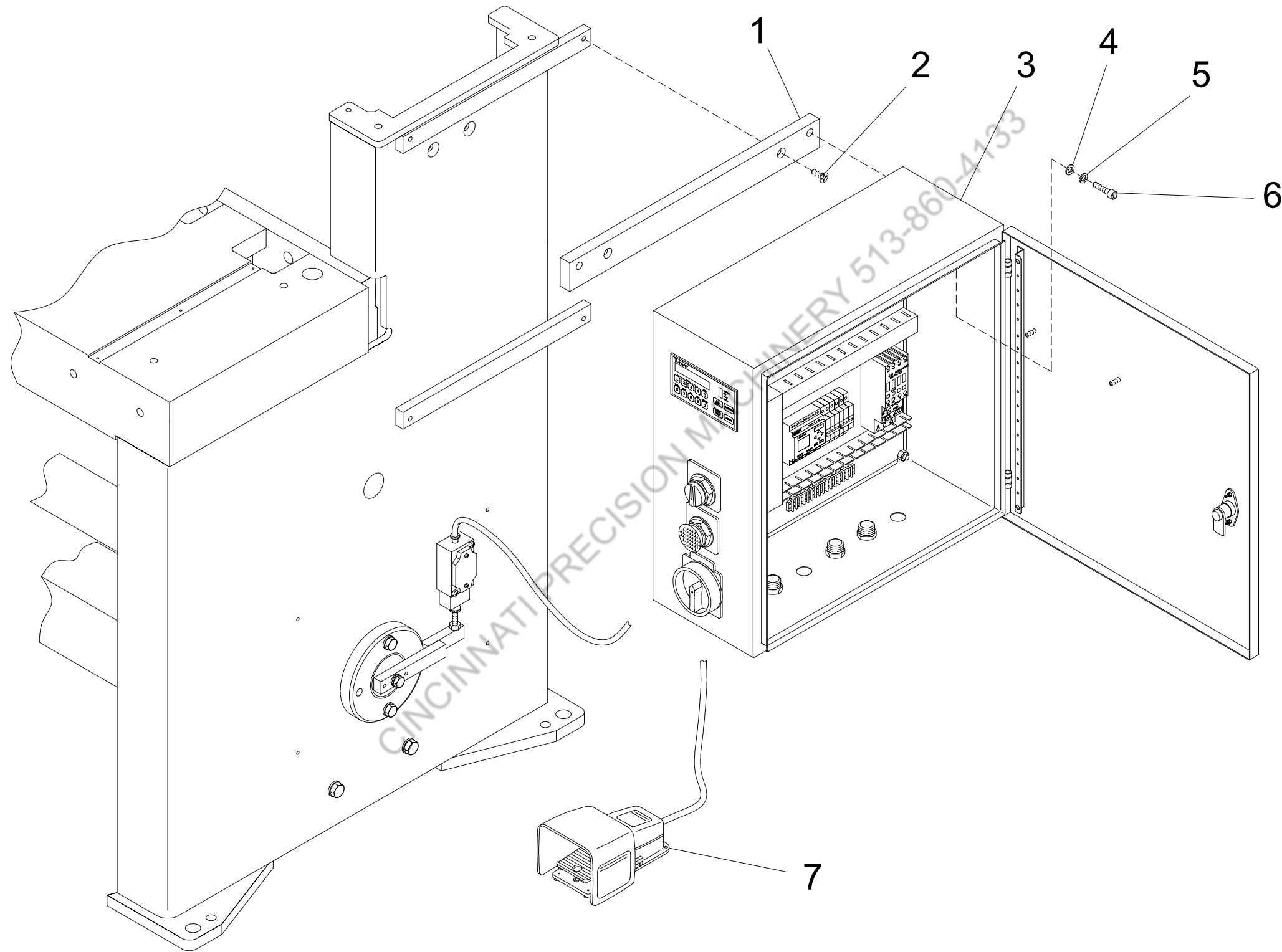


FIG. 3

## NC PANEL

ITEM	QTY	RW PART #	RW PART DESCRIPTION
1	2	773180216	ELECTRIC PANEL SUPPORT MOUNTING BRACKET
2	4	613012089	1/4-20 X 3/4 SOC HD FLAT SCREW
3	1	660193196	NC 230V PANEL
4	4	678033103	1/4 FLAT WASHER
5	4	679033103	1/4 LOCK WASHER
6	4	611012130	5/16-18 X 5/8 SOC HD CP SCREW
7	1	660092104	FOOT SWITCH (LM #511-BO)

CINCINNATI PRECISION MACHINERY 513-860-4133

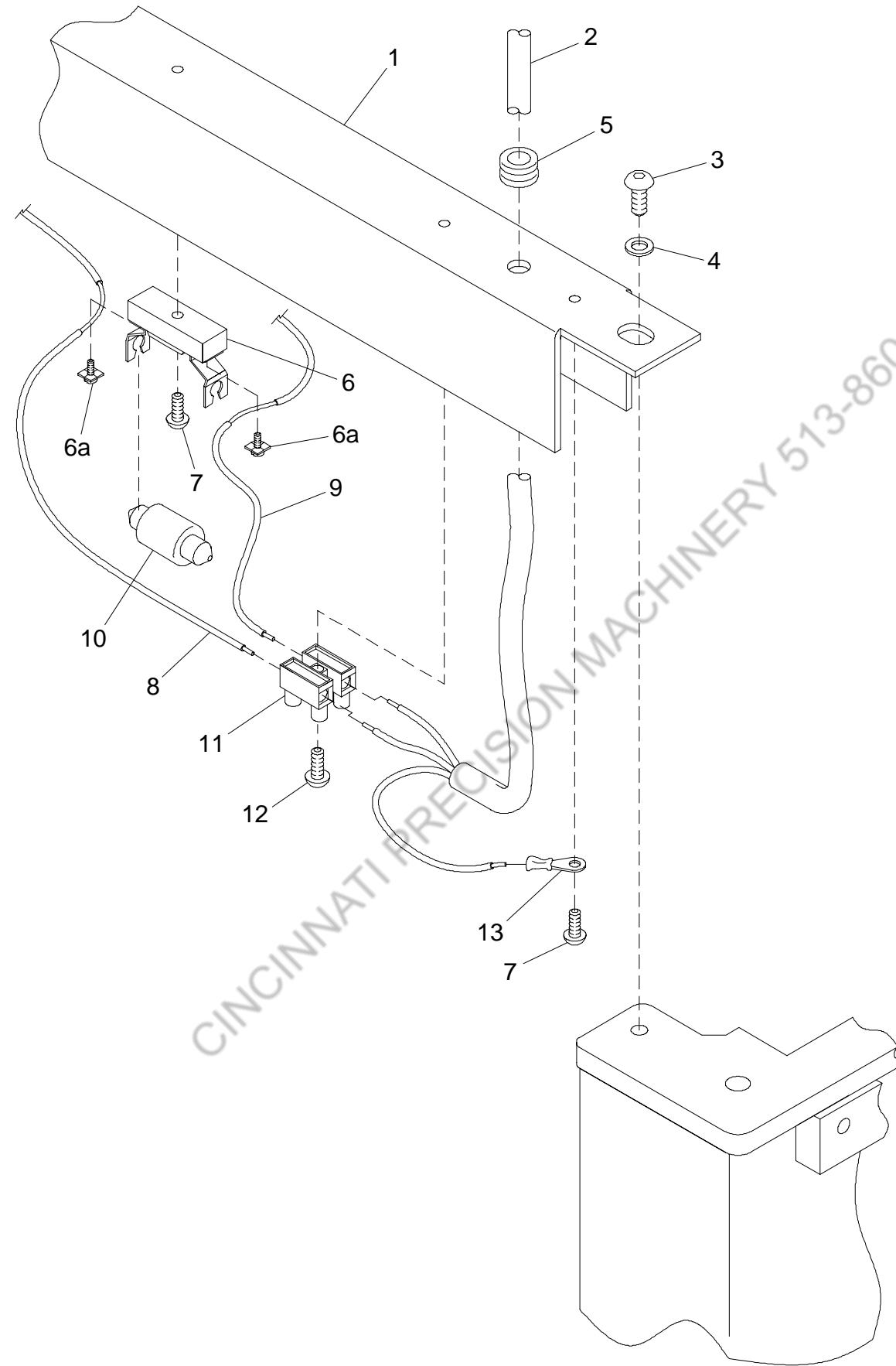


FIG. 4

## LIGHT ASSEMBLY

ITEM	QTY	RW PART #	RW PART DESCRIPTION
1	1	773140053	LIGHT FRAME
2	1	660000022	WIRE-CORD #16/3 TYPE SJ
3	2	615012084	1/4-20 X 3/8 SOCKET HEAD BUTTON SCREW
4	2	678033103	1/4 FLAT WASHER
5	1	600000378	RUBBER GROMMET #9600K33
6	10	660000224	LAMP SOCKET
7	11	609012003	#6-32 X 3/8 RHM SCREW
8	1	660000225	SOLID 16 GA. WHITE WIRE
9	1	660000226	SOLID 16 GA. BLACK WIRE
10	10	660000223	LAMP (FESTOONE)
11	1	660000227	TERMINAL STRIP
12	1	607012005	#6-32 X 1/2 FM SCREW
13	1	660182900	16 GA. RING TERMINAL

SECTION 3:

**BACKGAUGE**  
**AND MATERIAL RETURN**

CINCINNATI PRECISION MACHINERY 513-860-4133

# BACKGAUGE AND RETURN - 10M14

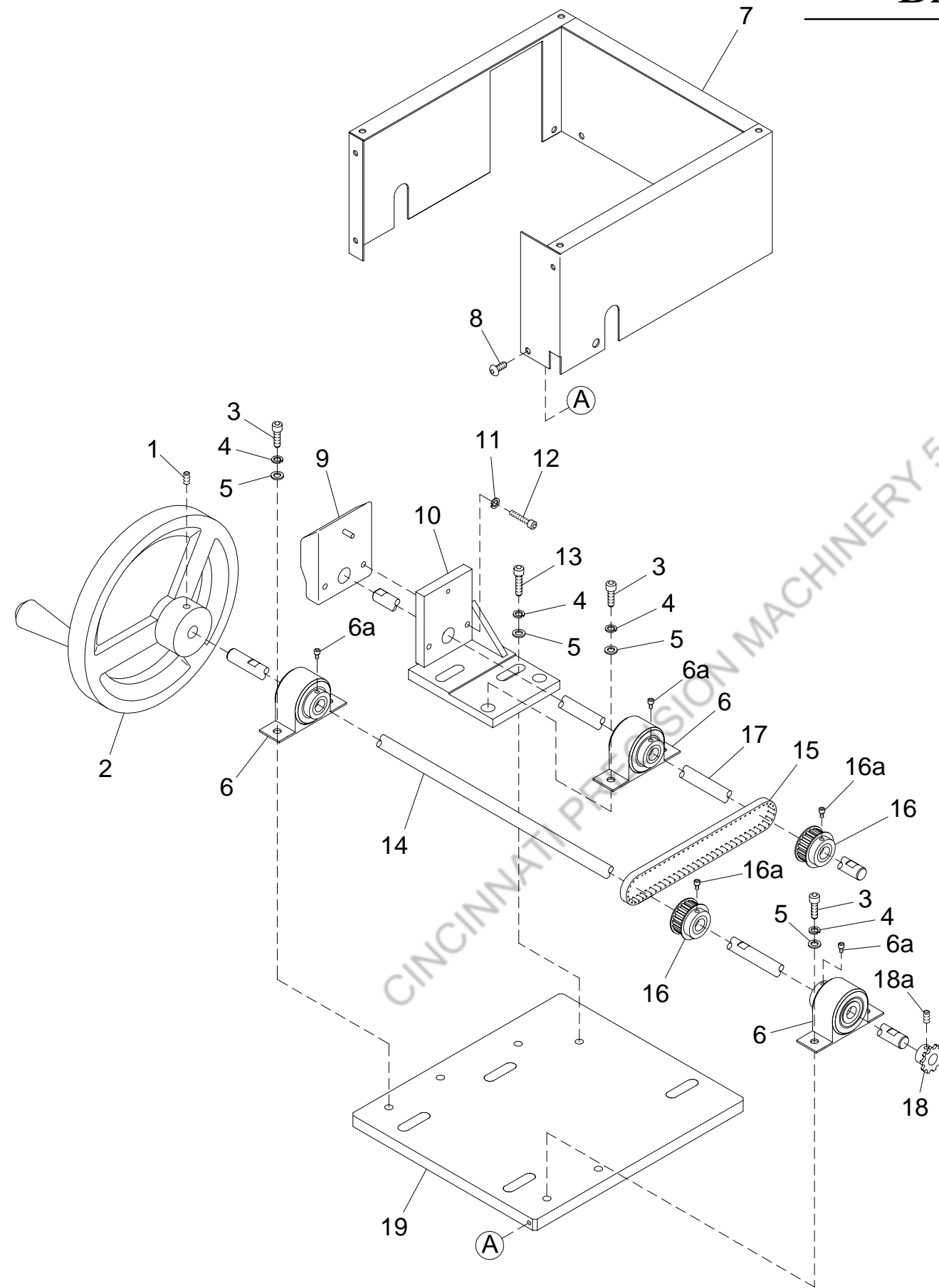


FIG. 1

## FRONT OPERATED COUNTER

ITEM	QTY	RW PART #	RW PART DESCRIPTION	ITEM	QTY	RW PART #	RW PART DESCRIPTION
1	2	621012086	1/4-20 X 1/2 SSCP SCREW	11	2	679033102	#10 LOCK WASHER
2	1	773000108	HANDWHEEL	12	2	612012054	#10-32 X 3/4 SHC SCREW
3	6	611012131	5/16-18 X 3/4 SHC SCREW	13	2	611012133	5/16-18 X 1 SHC SCREW
4	8	679033104	5/16 LOCK WASHER	14	1	773680014	DRIVE SHAFT
5	8	678033104	5/16 FLAT WASHER	15	1	673265324	BROWNING GEARBELT #160XL025
6	3	673315805	PILLOW BLOCK WITH BEARING	16	2	673275435	GEARBELT PULLEY
7	1	773440018	GUARD	17	1	773680015	COUNTER SHAFT
8	5	615012026	#8-32 X 3/8 SHB SCREW	18	1	673285515	SPROCKET, .500 I.D.
9	1	673000371	COUNTER 250AM-X00.20(50)CCW1/2	19	1	773060017	COUNTER MOUNTING PLATE
10	1	773200016	COUNTER MOUNTING BRACKET				

# BACKGAUGE AND RETURN - 10M14

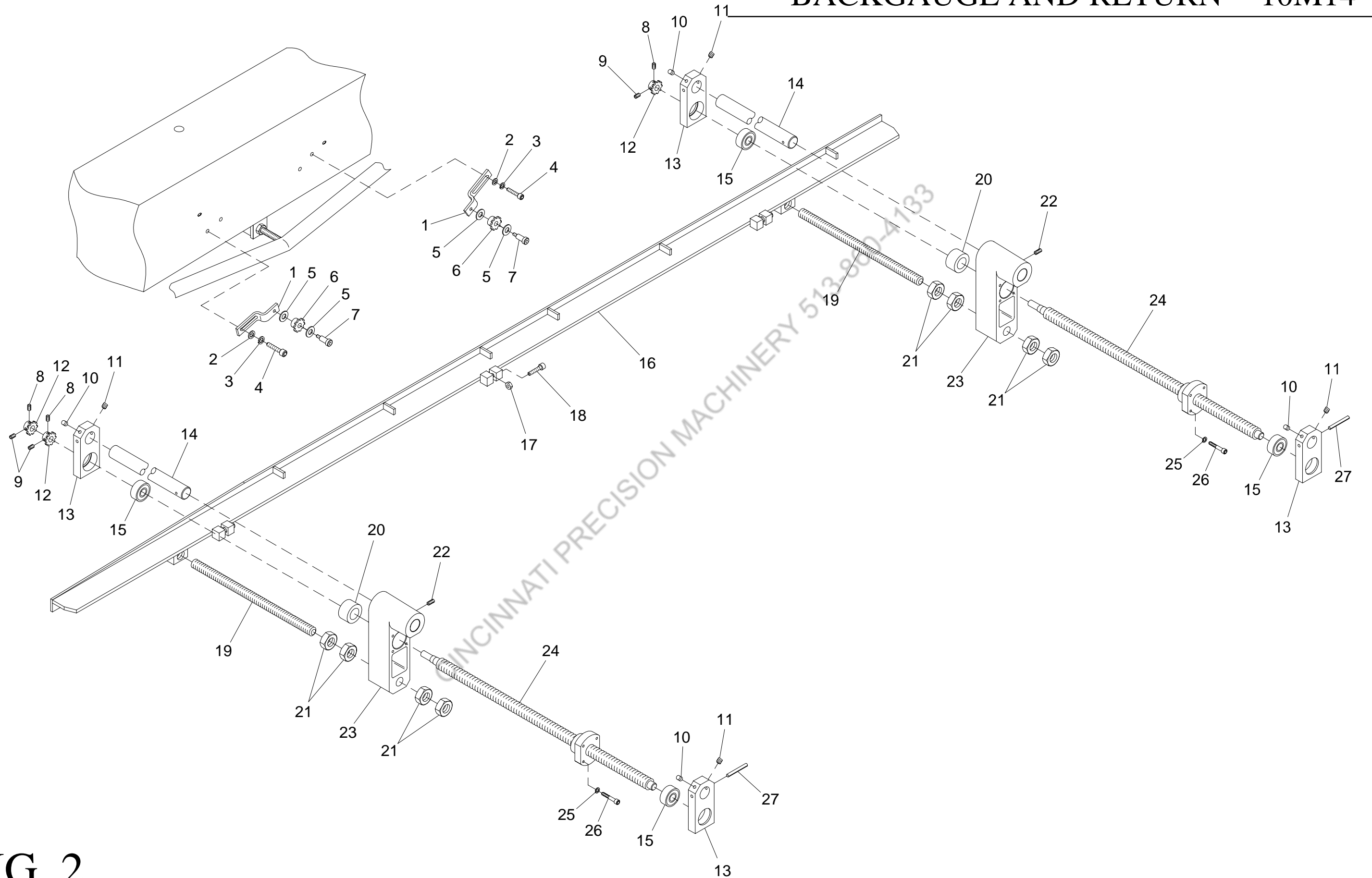


FIG. 2



## FRONT OPERATED BACKGAUGE

ITEM	QTY	RW PART #	RW PART DESCRIPTION	ITEM	QTY	RW PART #	RW PART DESCRIPTION
1	2	773200021	IDLER BRACKET	15	4	673204725	BEARING, SKF#6304_2RSI
2	4	678033104	5/16 FLAT WASHER	16	1	773130232	BACKGAUGE STOP (NEW)
3	4	679033104	5/16 LOCK WASHER	17	3	649023005	3/8-16 JAM HEX NUT
4	4	611012133	5/16-18 X 1 SHC SCREW	18	3	611012183	3/8-16 X 2 SHC SCREW
5	4	633033137	1/2 SILICON BRZ. FLAT WASHER	19	2	773030000	BACKGAUGE HOLDER ROD
6	2	673285514	IDLER SPROCKET .500 I.D.	20	2	773080006	GUIDE BUSHING
7	2	642012656	1/2 X 1 SHOULDER SCREW	21	8	649023012	1-8 JAM HEX NUT
8	3	625012084	1/4-20 X 3/8 DOG POINT SOCKET SET SCREW	22	2	621012084	1/4-20 X 3/8 SSCP SCREW
9	3	621012086	1/4-20 X 1/2 CUP POINT SOCKET SET SCREW	23	2	773130009	GUIDE BLOCK
10	4	625012130	5/16-18 X 5/8 DOG POINT SOCKET SET SCREW	24	2	600000396	ACME SCREW/NUT ASSEMBLY
11	4	621012128	5/16-18 X 1/2 CUP POINT SOCKET SET SCREW	25	8	679033103	1/4 LOCK WASHER
12	3	673285513	SPROCKET, .625 I.D.	26	8	611012095	1/4-20 X 1-1/2 SHC SCREW
13	4	773010003	BEARING MOUNT	27	2	600063497	1/4 X 2-3/4 ROLL PIN
14	2	773680001	BACKGAUGE SUPPORT SHAFT				

# BACKGAUGE AND RETURN - 10M14

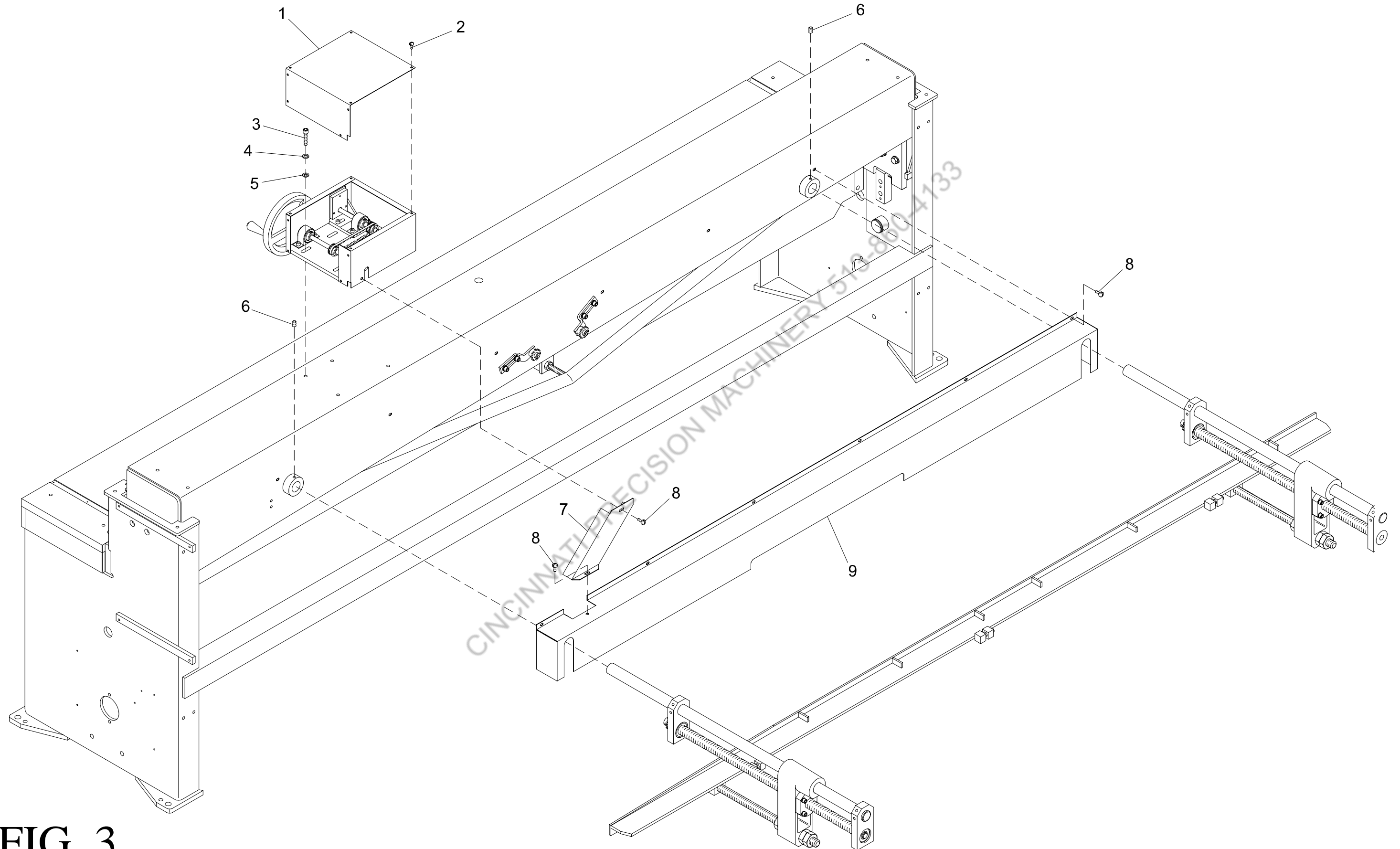


FIG. 3

## FRONT OPERATED BACKGAUGE ATTACHMENT

ITEM	QTY	RW PART #	RW PART DESCRIPTION
1	1	773220019	GUARD COVER
2	7	615012026	8-32 X 3/8 SHB SCREW
3	4	611012137	5/16-18 X 1-1/2 SHC SCREW
4	4	679033104	5/16 LOCK WASHER
5	4	678033104	5/16 FLAT WASHER
6	4	621012128	5/16-18 X 1/2 SSCP SCREW
7	1	773440022	UPPER CHAIN GUARD
8	8	615012086	1/4-20 X 1/2 SOCKET HEAD BUTTON SCREW
9	1	773440023	LOWER CHAIN GUARD

CINCINNATI PRECISION MACHINERY 513-860-4139

# BACKGAUGE AND RETURN - 10M14

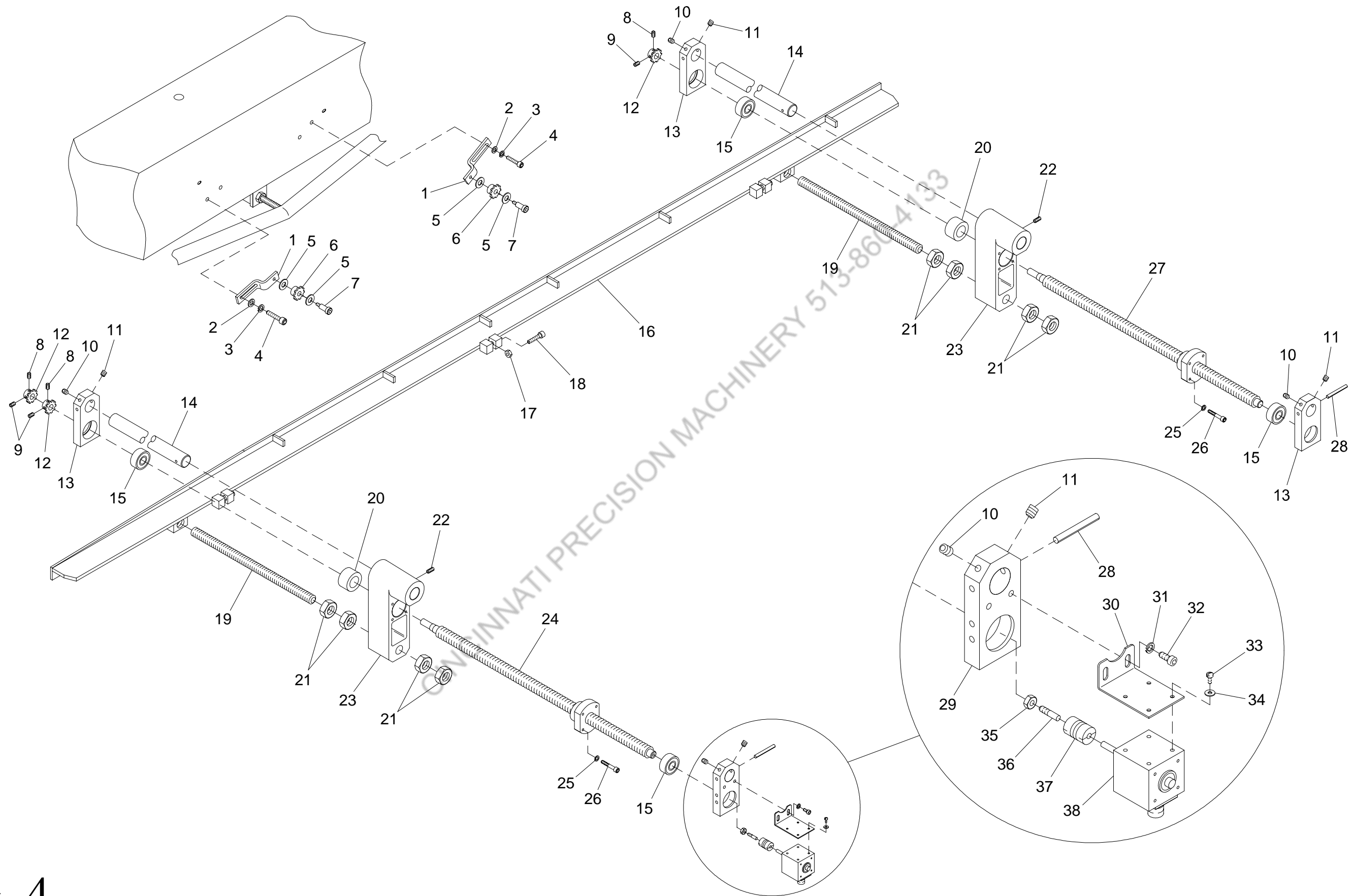


FIG. 4

## DRO/NC BACKGAUGE

ITEM	QTY	RW PART #	RW PART DESCRIPTION	ITEM	QTY	RW PART #	RW PART DESCRIPTION
1	2	773200021	IDLER BRACKET	20	2	773080006	GUIDE BUSHING
2	4	678033104	5/16 FLAT WASHER	21	8	649023012	1-8 JAM HEX NUT
3	4	679033104	5/16 LOCK WASHER	22	2	621012084	1/4-20 X 3/8 SSCP SCREW
4	4	611012133	5/16-18 X 1 SHC SCREW	23	2	773130009	GUIDE BLOCK
5	4	633033137	1/2 SILICON BRZ. FLAT WASHER	24	1	600000432	SCREW/NUT ASSEMBLY, NC/DRO MODEL
6	2	673285514	IDLER SPROCKET .500 I.D.	25	8	679033103	1/4 LOCK WASHER
7	2	642012656	1/2 X 1 SHOULDER SCREW	26	8	611012095	1/4-20 X 1-1/2 SHC SCREW
8	3	625012084	1/4-20 X 3/8 DOG POINT SOCKET SET SCREW	27	1	600000396	ACME SCREW/NUT ASSEMBLY
9	3	621012086	1/4-20 X 1/2 CUP POINT SOCKET SET SCREW	28	2	600063497	1/4 X 2-3/4 ROLL PIN
10	4	625012130	5/16-18 X 5/8 DOG POINT SOCKET SET SCREW	29	1	773010190	BEARING MOUNT - DRO
11	4	621012128	5/16-18 X 1/2 CUP POINT SOCKET SET SCREW	30	1	773200154	ENCODER BRACKET - DRO
12	3	673285513	SPROCKET, .625 I.D.	31	2	679033103	1/4 LOCK WASHER
13	3	773010003	BEARING MOUNT	32	2	611012088	1/4-20 X 5/8 SHC SCREW
14	2	773680001	BACKGAUGE SUPPORT SHAFT	33	4	609012003	#6-32 X 3/8 ROUND HEAD SCREW
15	4	673204725	BEARING, SKF#6304_2RSI	34	4	678033100	#6 FLAT WASHER
16	1	773130232	BACKGAUGE STOP (NEW)	35	1	649023005	3/8-16 JAM HEX NUT
17	3	649023005	3/8-16 JAM HEX NUT	36	1	773680199	ENCODER SHAFT - DRO/NC
18	3	611012183	3/8-16 X 2 SHC SCREW	37	1	660386621	ENCODER COUPLING
19	2	773030000	BACKGAUGE HOLDER ROD	38	1	660000068	ENCODER WITH CABLE (200 PPR)

# BACKGAUGE AND RETURN - 10M14

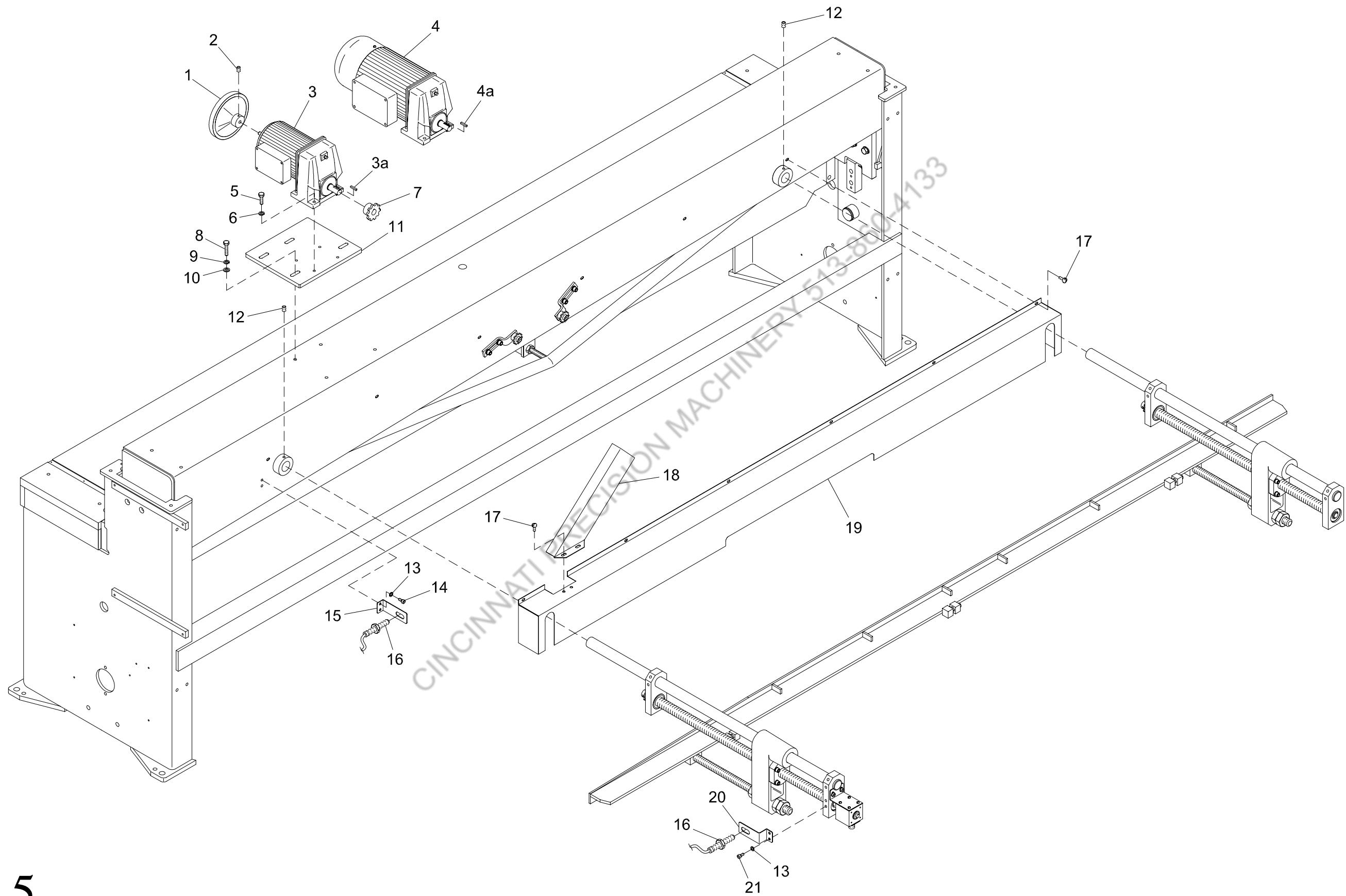
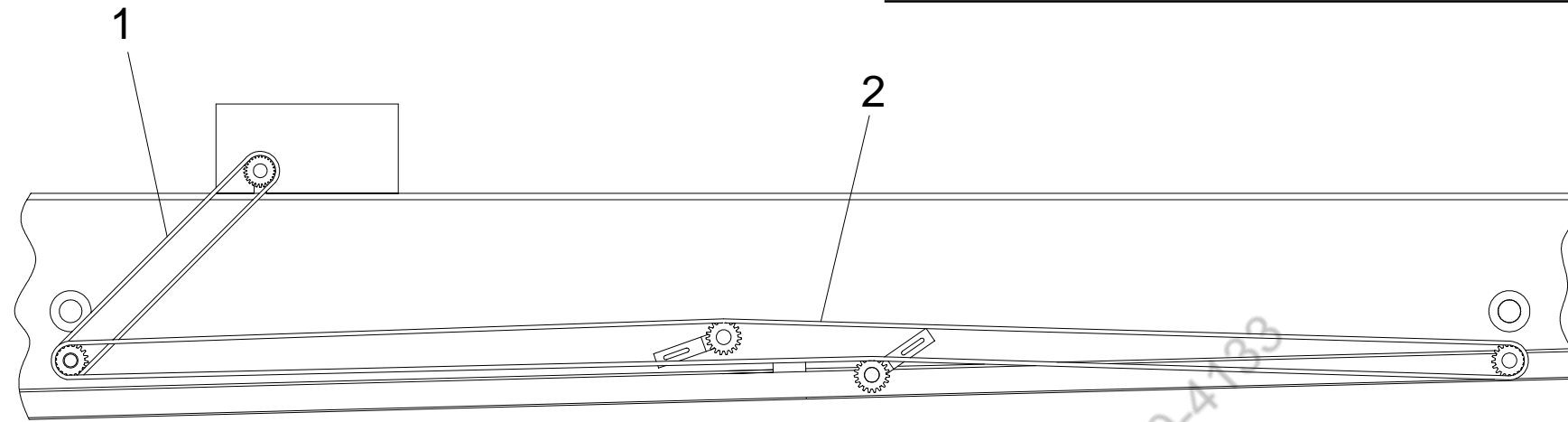


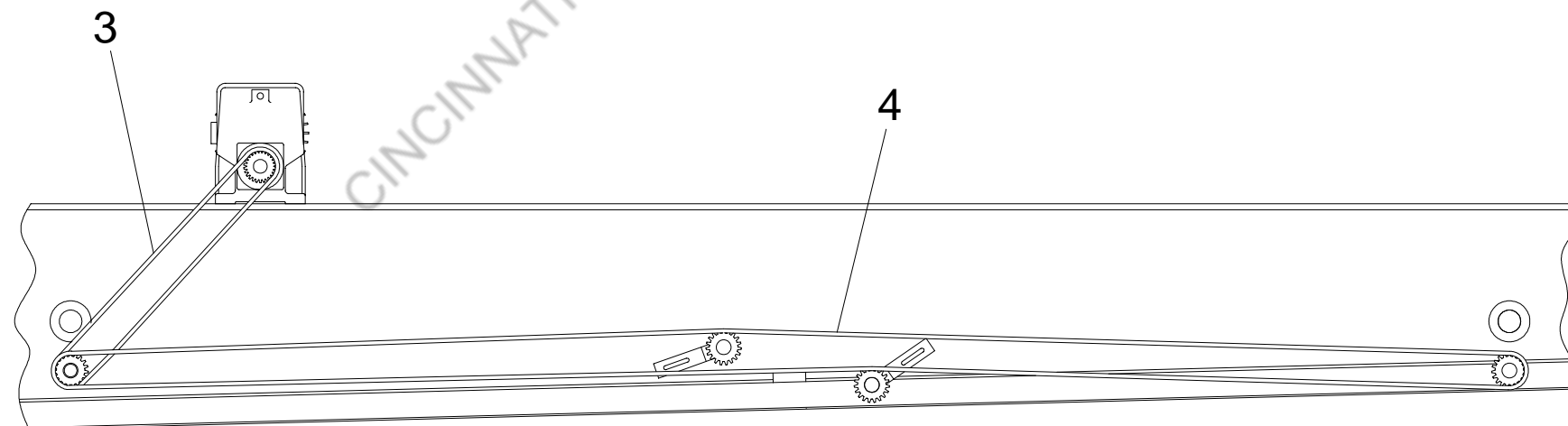
FIG. 5

## DRO/NC BACKGAUGE ATTACHMENT

ITEM	QTY	RW PART #	RW PART DESCRIPTION	ITEM	QTY	RW PART #	RW PART DESCRIPTION
1	1	773000223	MOTOR HANDWHEEL - DRO	12	4	621012128	5/16-18 X 1/2 SSCP SCREW
2	2	621012086	1/4-20 X 1/2 CUP POINT SET SCREW	13	4	678033103	1/4 FLAT WASHER
3	1	660011110	MOTOR AND GEAR BOX - DRO	14	2	611012088	1/4-20 X 5/8 SHC SCREW
4	1	660011171	MOTOR AND GEAR BOX - NC	15	1	773200189	FRONT OVERTRAVEL BRACKET - NC/DRO
5	4	601012133	5/16-18 X 1 HHC SCREW	16	2	660152632	A.C. PROX SENSOR
6	4	679033104	5/16 LOCK WASHER?	17	8	615012086	1/4-20 X 1/2 SOCKET HEAD BUTTON SCREW
7	1	773000222	B/G MOTOR SPROCKET NC/DRO	18	1	773440230	UPPER CHAIN GUARD - NC/DRO
8	4	611012137	5/16-18 X 1-1/2 SHC SCREW	19	1	773440228	LOWER CHAIN GUARD - NC/DRO
9	4	679033104	5/16 LOCK WASHER	20	1	773200155	REAR OVERTRAVEL BRACKET - NC/DRO
10	4	678033104	5/16 FLAT WASHER	21	2	615012084	1/4-20 X 3/8 SOCKET HEAD BUTTON SCREW
11	1	773060186	MOTOR MOUNT PLATE - NC/DRO				



Rear View of Ram with Handwheel Assembly



Rear View of Ram with NC/DRO Assembly

FIG. 6



## CHAINS

### RAM WITH HANDWHEEL ASSEMBLY

ITEM	QTY	RW PART #	RW PART DESCRIPTION
1	1	673000373	ROLLER CHAIN 156 LINKS 39" LONG
2	1	673000372	ROLLER CHAIN 730 LINKS 182.50" LONG

### RAM WITH NC/DRO ASSEMBLY

ITEM	QTY	RW PART #	RW PART DESCRIPTION
3	1	673000405	CHAIN WITH CONNECTING LINK - NC/DRO - 47" LONG
4	1	673000372	ROLLER CHAIN 730 LINKS 182.50" LONG

# BACKGAUGE AND RETURN - 10M14

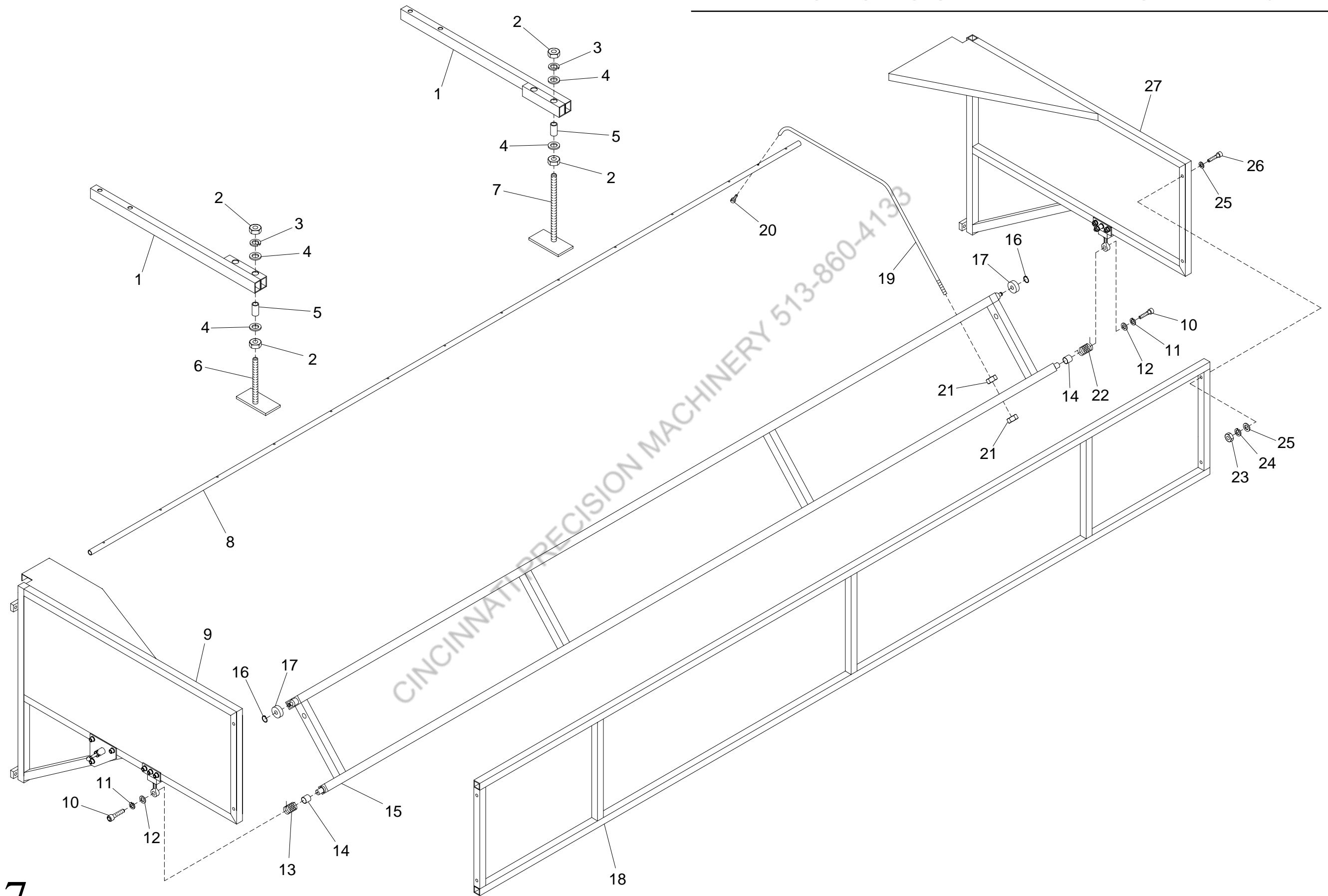


FIG. 7

## MATERIAL RETURN

ITEM	QTY	RW PART #	RW PART DESCRIPTION	ITEM	QTY	RW PART #	RW PART DESCRIPTION
1	2	773180192	SUPPORT TUBE	15	1	773000099	BAIL
2	4	643023009	5/8-11 FULL HEX NUT	16	2	673164325	RETAINING RING TRU-ARC #5100-39
3	2	679033109	5/8 LOCK WASHER	17	2	600204727	BEARING (SKF# 6000-2RS)
4	4	678033109	5/8 FLAT WASHER	18	1	773140234	REAR FRAME (NEW DESIGN)
5	2	773630191	STAND OFF SPACER	19	14	773030088	MATERIAL RETURN ROD
6	1	773030164	SHORT STANDOFF POST	20	14	673012662	#10-24 X 3/8 LG. PAN HD. SCREW
7	1	773030163	LONG STANDOFF POST	21	28	643023005	3/8-16 FULL HEX NUT
8	1	773000089	SEPARATOR ROD	22	1	673184609	LEFT SPRING
9	1	773140052	RIGHT FRAME	23	4	643023004	5/16-18 FULL HEX NUT
10	2	611012095	1/4-20 X 1-1/2 SHC SCREW	24	4	679033104	5/16 LOCK WASHER
11	2	679033103	1/4 LOCK WASHER	25	8	678033104	5/16 FLAT WASHER
12	2	678033103	1/4 FLAT WASHER	26	4	611012139	5/16-18 X 1-3/4 SHC SCREW
13	1	673184608	RIGHT SPRING	27	1	773140051	LEFT FRAME
14	2	773180096	TUBE SUPPORT				

# BACKGAUGE AND RETURN - 10M14

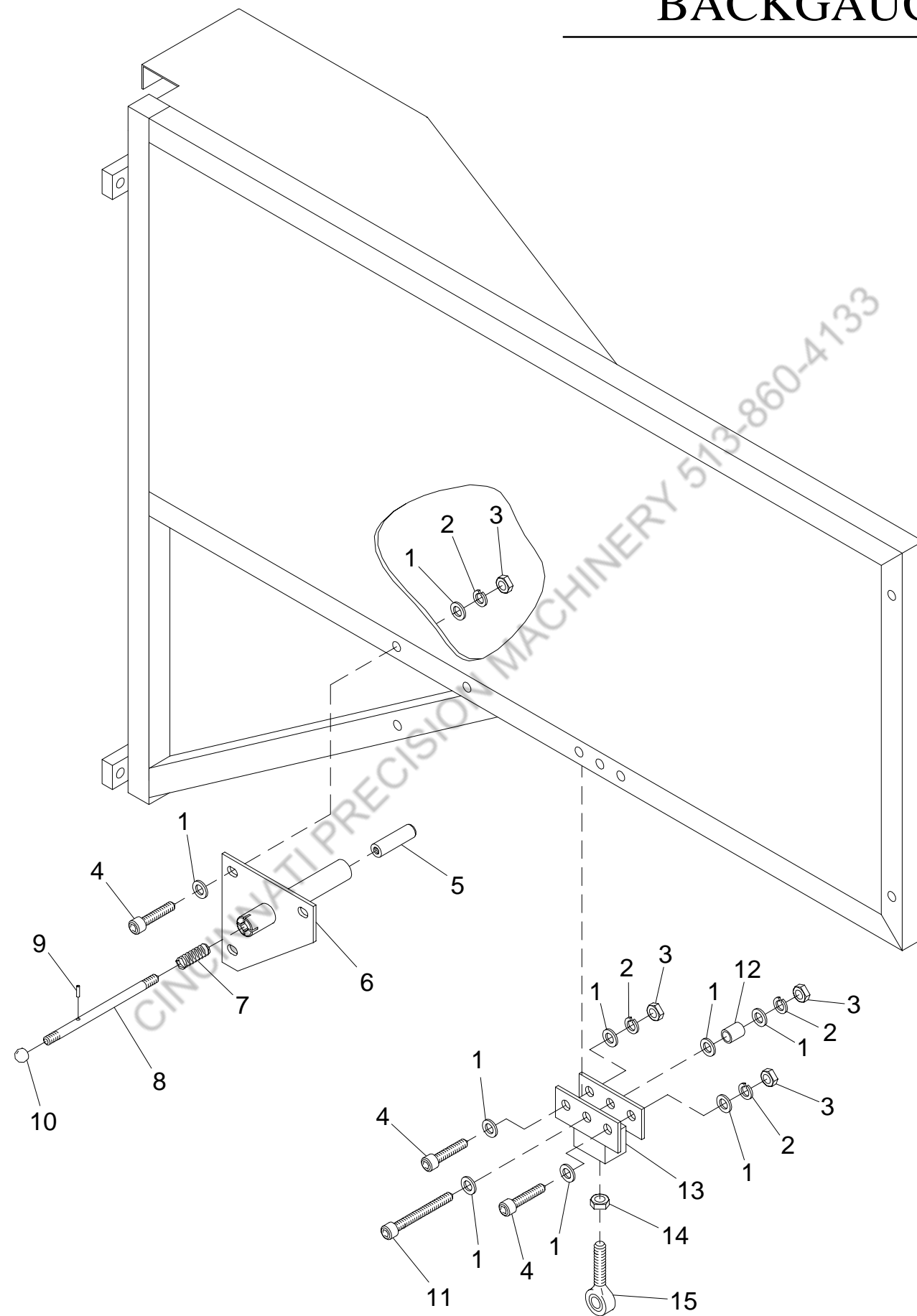


FIG. 8

## MATERIAL RETURN - EXPLODED VIEW

ITEM	QTY	RW PART #	RW PART DESCRIPTION	ITEM	QTY	RW PART #	RW PART DESCRIPTION
1	18	678033104	5/16 FLAT WASHER	9	1	600063435	ROLL PIN 1/8 X 3/4
2	9	679033104	5/16 LOCK WASHER	10	1	673356346	JERGENS NOB #31308
3	9	643023004	5/16-18 FULL HEX NUT	11	2	601012143	5/16-18 X 2-1/2 HHC SCREW
4	7	611012139	5/16-18 X 1-3/4 SHC SCREW	12	2	773820093	TUBE
5	1	773160102	LOCK OUT PIN	13	2	773200054	BAIL BRACKET
6	1	773000101	DETENT PLATE	14	2	645023009	5/8-18 FULL HEX NUT
7	1	673184610	COMPRESSION SPRING #C0-480-055-3000	15	2	673000382	ROD END BEARING #6072K25
8	1	773030103	THREADED LOCK ROD				

CINCINNATI PRECISION MACHINERY 513-600-4433

# BACKGAUGE AND RETURN - 10M14

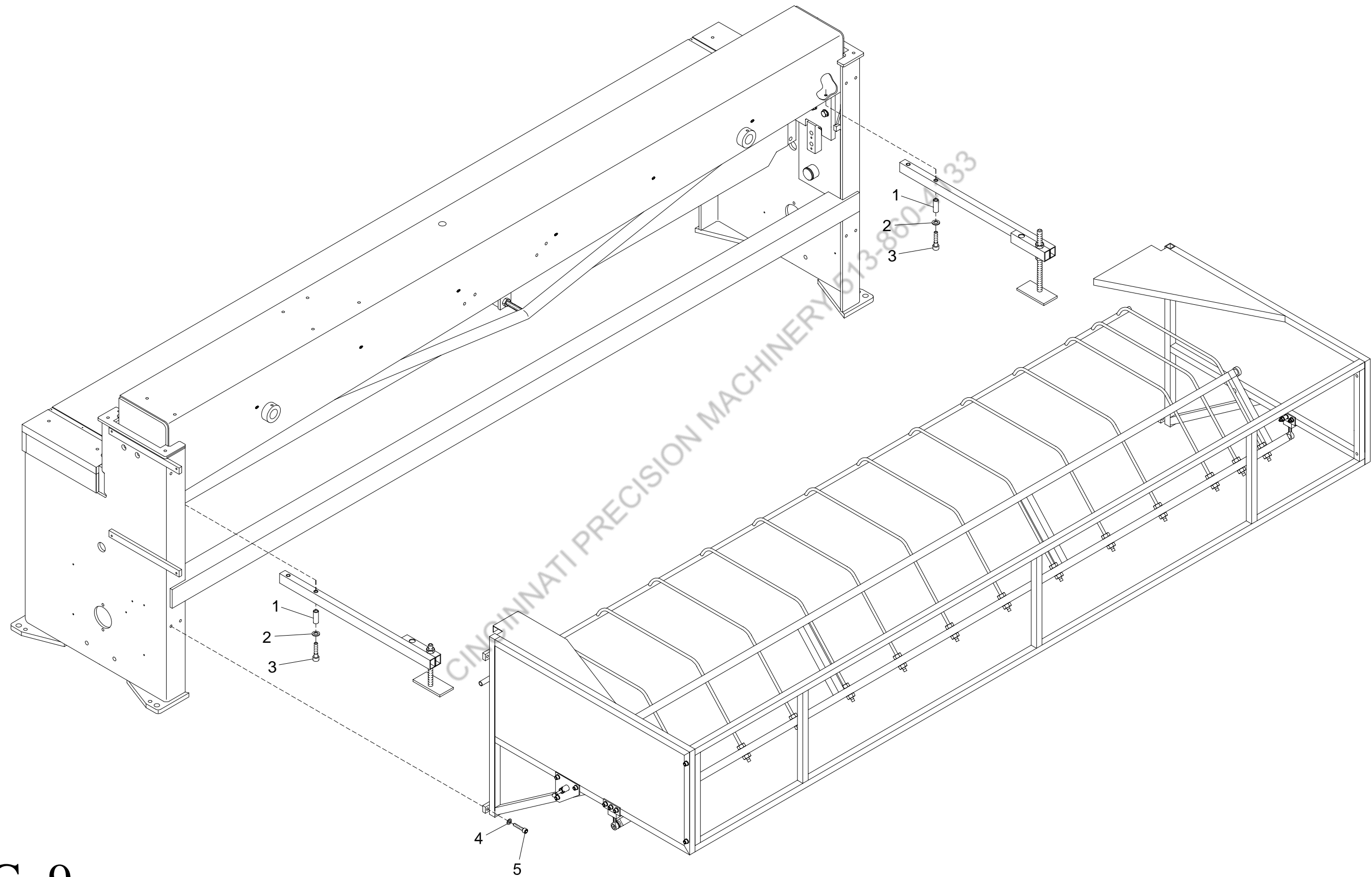


FIG. 9

## MATERIAL RETURN ATTACHMENT

ITEM	QTY	RW PART #	RW PART DESCRIPTION
1	4	773630104	STAND OFF SPACER
2	4	678033105	3/8 FLAT WASHER
3	4	601012184	3/8-16 X 2-1/4 HHC SCREW
4	8	679033104	5/16 LOCK WASHER
5	8	611012133	5/16-18 X 1 SHC SCREW

CINCINNATI PRECISION MACHINERY 513-860-4133