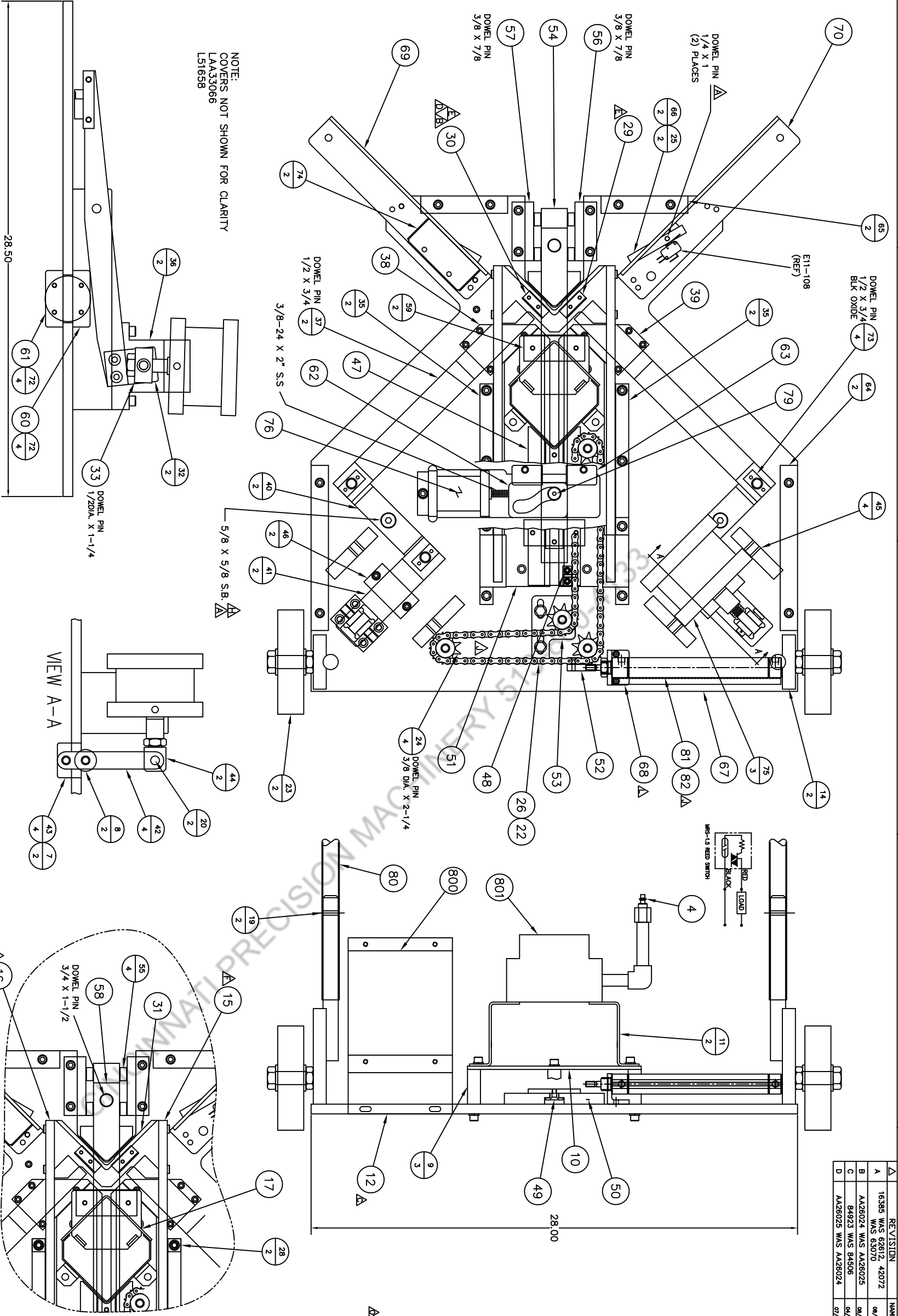


* LOCKFORMER PRINT COPIED TO AutoCAD *



REV	DATE	BY	CHKD	DESCRIPTION
A	16386	WAS 62812	42072	REVISION
B	AA26024	WAS AA26025		
C	84923	WAS 84506		
D	AA26025	WAS AA26024		

ITEM	QTY	DESCRIPTION	STOCK NO.	ANGLES
60	1	LOOK CYLINDER BRACKET TOP	LAA26058	EA
59	2	DRIVE BAR GUIDE	LAA26057	EA
58	1	DRIVE BAR	LAA26056	EA
57	1	LINKAGE BASE-RIGHT	LAA26055	EA
56	1	LINKAGE BASE-LEFT	LAA26054	EA
55	4	LINKAGE	LAA26053	EA
54	1	LOCK -35MM	LAA26052	EA
53	1	IDLER SPRING PLATE	LAA26051	EA
52	1	CHAIN BRACKET	LAA26050	EA
51	1	PUSHER PLATFORM RIGHT	LAA26049	EA
50	1	PUSHER PLATFORM LEFT	LAA26048	EA
49	1	PUSHER GUIDE	LAA26047	EA
48	1	CHAIN BRACKET	LAA26046	EA
47	1	PUSHER	LAA26045	EA
46	2	DRIVE RETAINER	LAA26044	EA
45	4	CYLINDER MOUNTING PLATE	LAA26043	EA
44	2	ROD END GRIPPER	LAA26042	EA
43	4	PIVOT BLOCK	LAA26041	EA
42	2	GRIPPER DRIVE LEVER	LAA26040	EA
41	2	GRIPPER DRIVER	LAA26039	EA
40	2	PIVOT LINK GRIPPER	LAA26038	EA
39	1	HOLD DOWN BRACKET LEFT	LAA26037	EA
38	1	HOLD DOWN BRACKET RIGHT	LAA26035	EA
37	2	GRIPPER BAR	LAA26034	EA
36	2	PRESSER CYLINDER SUPPORT	LAA26033	EA
35	2	PRESSER PIVOT BLOCK RIGHT/LEFT	LAA26032	EA
34	4	VALVE FLOW CONTROL 0.25 TUBE	360-0072-01-00	EA
33	1	ROD END TRUNNION	LAA26030	EA
32	2	PRESSER ARM END BLOCK	LAA26029	EA
31	1	PRESSER -35MM	LAA26026	EA
30	1	PRESSER BLOCK RIGHT	LAA26025	EA
29	1	PRESSER BLOCK LEFT	LAA26024	EA
28	2	SPACER	LAA24646	EA
27	2	507-0078-01-00	507-0078-01-00	EA
26	1	ALUMINUM LOADING STOCK	L73014	EA
25	2	CHAIN #41/2" P1.00-240P1	L73014	EA
24	2	SPRG COMP 0.300" OD MUSIC WIRE	L72681	EA
23	4	WHEEL #189.1/2" BORE	L72680	EA
22	2	WHEEL #189.1/2" BORE	L71177	EA
21	8	CHAIN #41 CONNLINK	L70777	EA
20	2	T-NUTS/5/16-18	L63074	EA
19	2	CLEVIS PIN (L63073	EA
18	2	PIN,CLEVIS MCKMASTER 894164011	L63072	EA
17	1	COVER WELDMENT	L51658	EA
16	1	MAGAZINE WELDMENT-35MM	L51644	EA
15	1	PRESSER ARM WELDMENT-RIGHT	L51565	EA
14	1	PRESSER ARM WELDMENT-LEFT	L51564	EA
13	1	WHEEL BRACKET WELDMENT	L51560	EA
12	1	SHIPPING PLATFORM	L38044	EA
11	1	ELECTRICAL BOX BRACKET	L32460	EA
10	2	VALVE ASSY BRACKET	L32446	EA
9	1	MANIFOLD PLATFORM	L30125	EA
8	3	STANDOFF	L16374	EA
7	2	GRIPPER ROLLER	L16372	EA
6	2	GRIPPER PIVOT SHAFT	L16370	EA
5	3	GRIPPER 3/8" BORE	050-0095-01-00	EA
4	1	FOSTER 10-3 MALE END PIG	040-0010-01-00	EA
3	1	FOSTER P13003 PNL 1/4 OSNCT	040-0009-01-00	EA
2	1	GAUGE PRES AIR 0-160 PSI	010-0053-01-00	EA
1	1	REG AIR S-129S9 0.25NPT	010-0043-01-00	EA

ITEM	QTY	DESCRIPTION	STOCK NO.	ANGLES
82	1	BIMBA REED SWITCH MRS-1.5	505-0039-01-0A	EA
81	1	CYL AIR/BIMBA MRS-09-6.5-D20	505-0039-01-00	EA
80	1	CORNER CADY HANDLE WELDMENT	507-0341-01-00	EA
79	1	CH3/4 SP CAM FOLLOWER 3/4" OD WCOL	LAA66624	EA
78	4	BRG BRONZE 3/8X1/2X1	LAA66429	EA
77	1	CYL AIR 1.500" BORE 2.50" STROKE	LAA65452	EA
76	1	CYL AIR 4.000" BORE 2.25" STROKE	LAA65451	EA
75	3	SWITCH COVER	LAA35657	EA
74	2	SOLE RAIL	LAA26068	EA
73	4	CAM GUIDE	LAA26061	EA
72	4	LOOK CYLINDER	L60384	EA
71	1	LOOK CYLINDER BOTTOM	LAA26059	EA

ITEM	QTY	DESCRIPTION	STOCK NO.	ANGLES
70	1	SWITCH RAIL-LEFT	LAA29835	EA
69	1	SWITCH RAIL-RIGHT	LAA29834	EA
68	1	CYLINDER MOUNTING ANGLE	506-0031-01-00	EA
67	1	BASE PLATE	LAA26072	EA
66	2	SWITCH LEVER	LAA26070	EA
65	2	FRONT RAIL	LAA26069	EA
64	2	SOLE RAIL	LAA26068	EA
63	1	CAM GUIDE	LAA26061	EA
62	1	LOOK CYLINDER	LAA26060	EA
61	1	LOOK CYLINDER BOTTOM	LAA26059	EA

ITEM	QTY	DESCRIPTION	STOCK NO.	ANGLES
70	1	SWITCH RAIL-LEFT	LAA29835	EA
69	1	SWITCH RAIL-RIGHT	LAA29834	EA
68	1	CYLINDER MOUNTING ANGLE	506-0031-01-00	EA
67	1	BASE PLATE	LAA26072	EA
66	2	SWITCH LEVER	LAA26070	EA
65	2	FRONT RAIL	LAA26069	EA
64	2	SOLE RAIL	LAA26068	EA
63	1	CAM GUIDE	LAA26061	EA
62	1	LOOK CYLINDER	LAA26060	EA
61	1	LOOK CYLINDER BOTTOM	LAA26059	EA

ITEM	QTY	DESCRIPTION	STOCK NO.	ANGLES
70	1	SWITCH RAIL-LEFT	LAA29835	EA
69	1	SWITCH RAIL-RIGHT	LAA29834	EA
68	1	CYLINDER MOUNTING ANGLE	506-0031-01-00	EA
67	1	BASE PLATE	LAA26072	EA
66	2	SWITCH LEVER	LAA26070	EA
65	2	FRONT RAIL	LAA26069	EA
64	2	SOLE RAIL	LAA26068	EA
63	1	CAM GUIDE	LAA26061	EA
62	1	LOOK CYLINDER	LAA26060	EA
61	1	LOOK CYLINDER BOTTOM	LAA26059	EA

DO NOT SCALE
TOLERANCES SPECIFIED BY DIMEN PLACES
±.005"
±.025"
±.050"

DATE: 12/01/2006
DRAWN BY: MIREMAN
CHECKED BY: JAVIER
SCALE: 1:1
SHEET: 1 OF 1

IDWA PRECISION
CORNER CADY ASSEMBLY, 35 mm
L56418