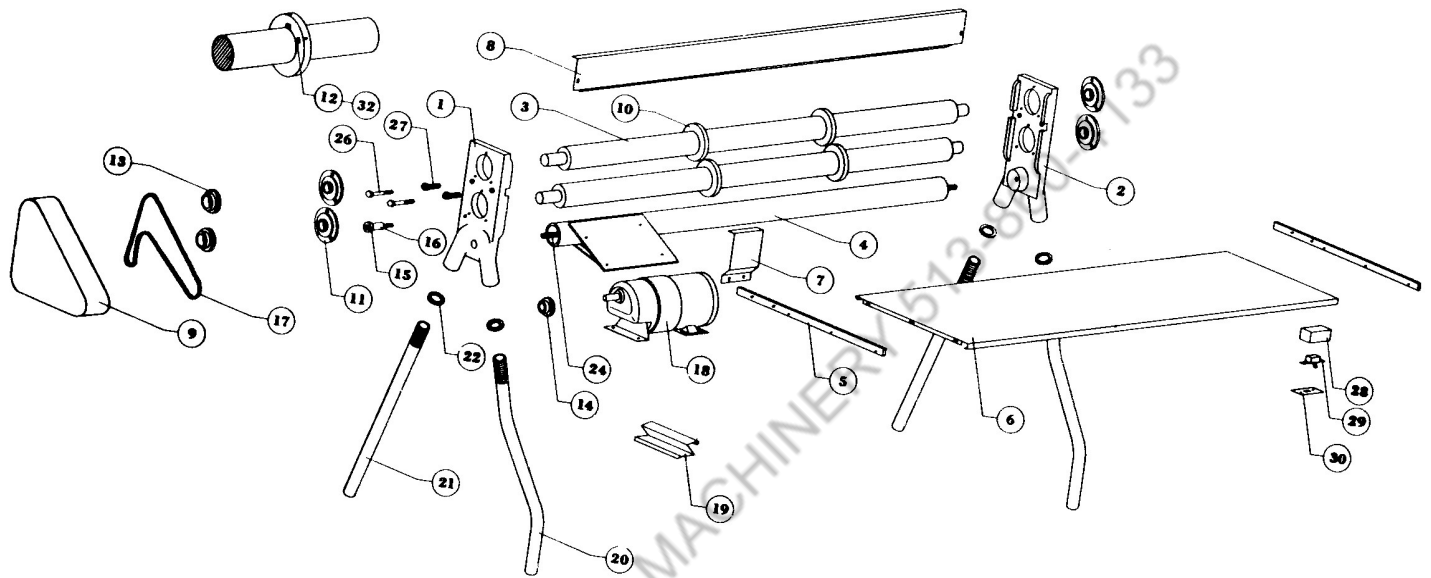


GARY SHEET SLITTERS

Model 3351

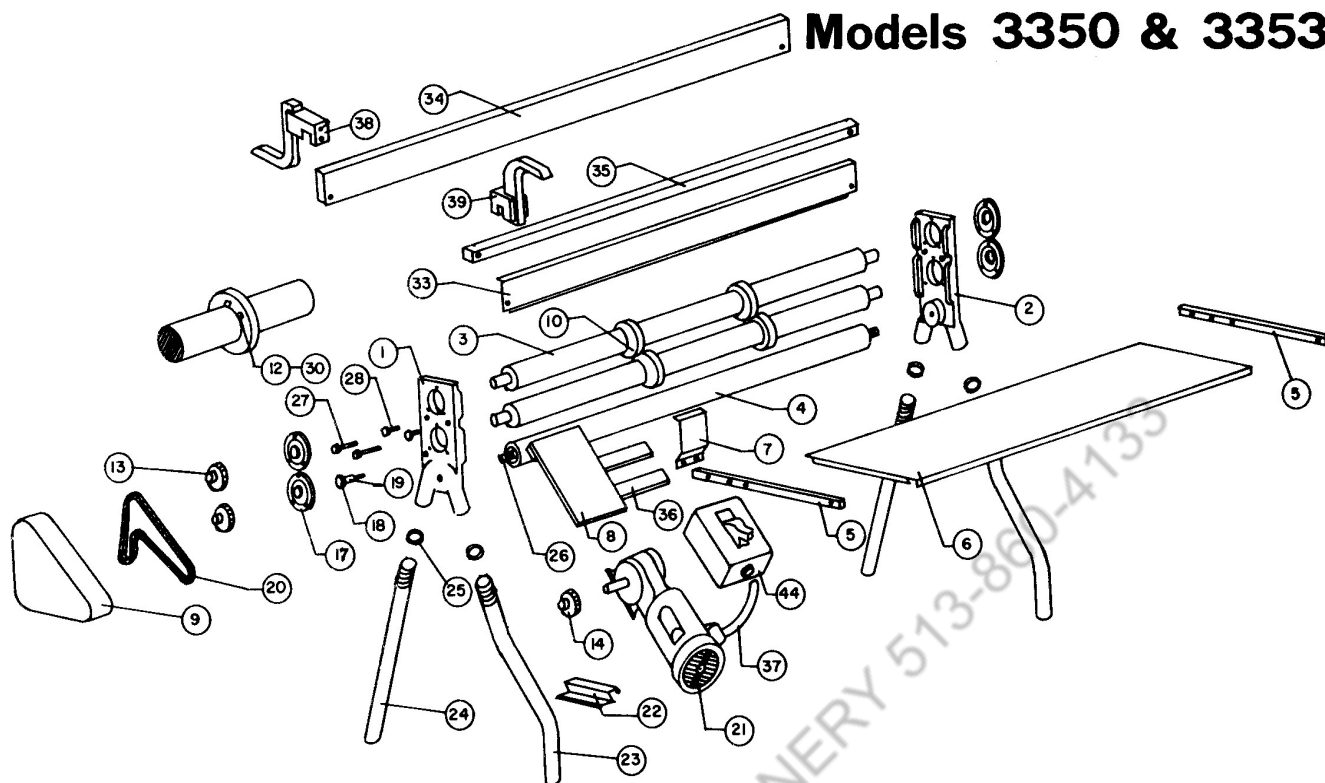


Part No.	Key No.	Description	Part No.	Key No.	Description
100014	1	Al-mag End Housing	200003	15	1/2" ID Chain Idler Bearing
100014	2	Al-mag End Housing	285026	16	Idler Bearing Bolt
100021	3	Knife Arbor- 3"OD x 57"	285048	17	No. 40 Chain
100016	4	Torsion Tube	200031	18	1/3HP Rt-angle Gearmotor 45-rpm
100022	5	Cold Roll Gauge	100011	19	Sheetmetal Sheet Guide
100025	6	Table Assembly	100020	20	Front Leg
100024	7	Table Support	100019	21	Rear Leg
100023	8	Finger Guard	285085	22	1-1/4" Drive Nut
100026	9	3351 Chain Guard	100015	24	Draw Bolt 5/8"-11NC x 6'
200027	10	3" x 5" x 3/4" STD Alloy Knives	275015	26	5/16" 18-N.C. Pull bolts
200028	10a	3" x 5" x 3/4" D2 (HCHC) Knives - Optional	100421	27	Gauge Adjusting Bolt x 1.5"
200015	11	1- 7/16" Arbor Bearing	203100	28	3350/3351 C-H Starter
200016	11a	Bearing Flange	203101	29	8 Amp Heater (110 Volts)
285022	12	234 Gib Key	200008	N.S.	Electric Cord w/Plug
200017	13	4020 x 1- 7/16" Arbor Sprocket	200011	N.S.	3/16" T-Handle Allen Wrench
200005	14	4015 x 1" Motor Sprocket			

N.S. – Not Shown

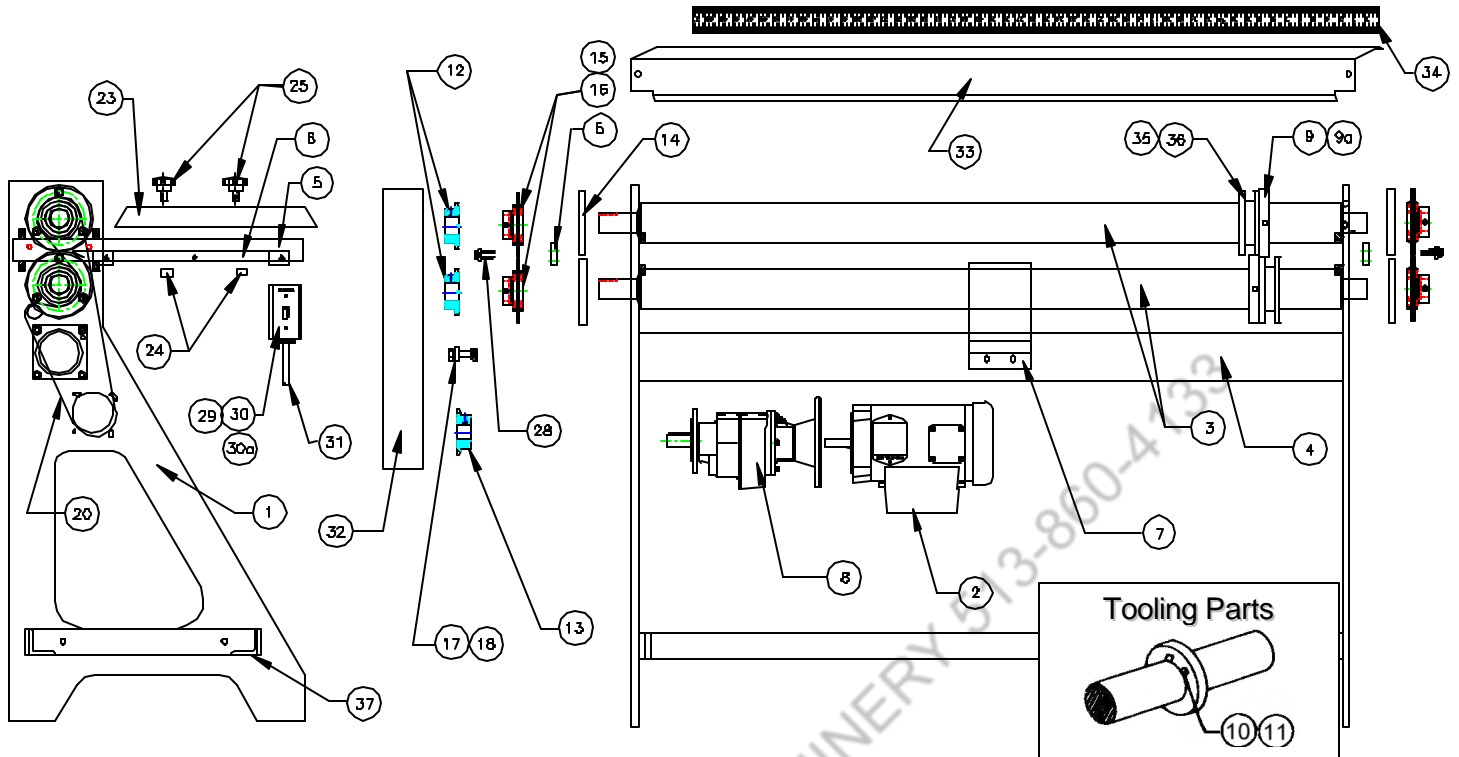
GARY SHEET SLITTERS

Models 3350 & 3353



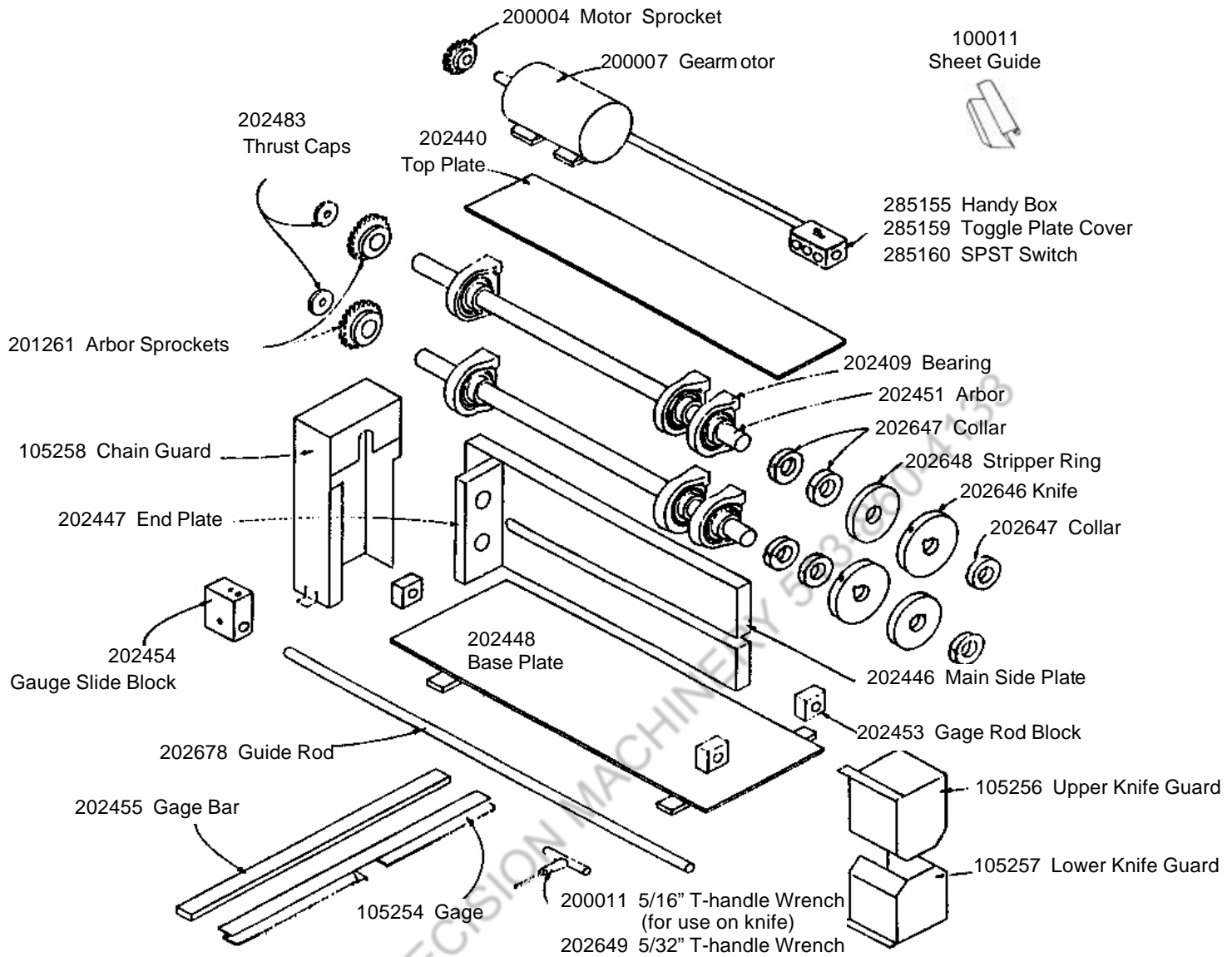
Part No.	Key No.	Description	Part No.	Key No.	Description
100014	1	Al-mag End Housing	100011	22	Sheetmetal Sheet Guide
100014	2	Al-mag End Housing	100020	23	Front Leg
100021	3	Knife Arbor- 3"OD x 57"	100019	24	Rear Leg
100016	4	Torsion Tube	285085	25	1-1/4" Drive Nut
100022	5	Cold Roll Gauge	100015	26	Draw Bolt 5/8"-11NC x 6'
100025	6	Table Assembly	275015	27	5/16" 18-N.C. Pull bolts
100024	7	Table Support	100421	28	Gauge Adjusting Bolt x 1.5"
101593	8	3350 & 3353 Motorbase	285018	30	3/8-24 x 1/2" Half Dog Point Set Screw
101596	9	3350 & 3353 Chain Guard	100033	33	Finger Guard
200027	10	3" x 5" x 3/4" STD Alloy Knives	100031	34	Front Stripper Bar
200028	10a	3" x 5" x 3/4" D2 (HCHC) Knives - Optional	100032	35	Rear Stripper Bar
285022	12	234 Gib Key	185015	38	Upper Stripper Finger Assembly
200017	13	4020 x 1- 7/16" Arbor Sprocket	185016	39	Lower Stripper Finger Assembly
200018	14a	4020 x 1" Motor Sprocket -STD.(60 fpm)	203100	44	3350/3351 C-H Starter
200005	14b	4015 x 1" Motor Sprocket (40 fpm)	203101	44a	8 Amp Heater (220 Volts)
200016	17a	Bearing Flange	203102	44b	14 Amp Heater (110 Volts)
200015	17b	1- 7/16" Arbor Bearing	100029	N.S.	Rear Stripper Bar Spacer
200003	18	1/2" ID Chain Idler Bearing	100030	N.S.	Front Stripper Bar Spacer
285026	19	Idler Bearing Bolt	200008	N.S.	Electric Cord w/Plug
285048	20	No. 40 Chain	200011	N.S.	3/16" T-Handle Allen Wrench
201255	21	3/4HP Rt-angle Gearmotor 45-rpm			

MODEL 3350DX



Part No.	Key No.	Description	Part No.	Key No.	Description
3350-P24-18V2	1	End Housing –Drive Side	*285026	18	Idler Bearing Bolt
3350-P24-18	1A	End Housing – Idler Side	285048	20	No. 40 Chain
300309	2	Motor	106684	23	Adjustable Side Gage
100021	3	Knife Arbor - 3"OD x 57"	106683	24	Clamp Block
290073	4	Torsion Tube	202682	25	Reid DK-28 Plastic Knob
100022	5	Cold Roll Gauge	*275015	27	5/16" 18-N.C. Pull bolts
106692	6	Table Assembly for adjustable entry guide	100421	28	Gauge Adjusting Bolt x 1.5"
100024	7	Table Support	203100	29	3350/3351 C-H Starter
300308	8	Eurodrive Reducer	203102	30	14 Amp Heater (110 Volts)
200027	9	3" x 5" x 3/4" STD Alloy Knives	203101	30a	8 Amp Heater (220 Volts)
200028	9a	(Optional) 3" x 5" x 3/4" HCHC (D2) Knife	200008	31	Electric Cord w/Plug
285018	10	3/8-24 x 1/2" Half Dog Point Set Screw	106691	32	Chain Guard
285022	11	234 Gib Key	106690	33	Finger Guard
200017	12	4020 x 1- 7/16" Arbor Sprocket	203132	34	Scale (mounts on Finger guard)
200018	13	4020x 1" Motor Sprocket (60 fpm)	203129	35	3" x 5" Stripper Ring (Red)
3350-P24-15	14	Arbor Flange	285932	36	3" x 5" Clamp
200016	15	Bearing Flange	106689	37	Base Crosstie Shelf
200015	16	1- 7/16" Arbor Bearing	200011	N.S.	3/16" T-Handle Allen Wrench
200003	17	1/2" ID Chain Idler Bearing	106688	N.S.	Gage Trap Blocks

N.S. – Not Shown



Part No.	Description	Part No.	Description
100011	Sheet Guide	202450	Foot Mount
103533	Gage Pointer	*N.S.	202451 Arbor
105254	SM Gage	202453	Gage Rod Block
105256	Upper Knife Guard	202454	Gage Slide
105257	Lower Knife Guard	202455	Gage Bar
105258	Chain Guard	202462	Brewer SS Chain Tensioner
105345	Sheet Skid	*N.S.	202483 Thrust Cap
200003	1/2" Chain Idler Bearing	202646	Knives
200004	40BS10 Motor Sprocket	202647	1" Collar
200007	Gearmotor 2Z848	202648	Stripper Ring
200008	Electric Cord w/plug	*N.S.	202649 5/32" T Handle
200011	5/16" T Handle (optional for collars)	202678	Guide Rod
201261	40B14 Sprocket	202682	Hand Knob
202409	Browning Bearing	285048	#40 Chain
202431	Measuring Stix	*N.S.	285155 2x4 Handy Box
202440	Top Plate	285159	Toggle Plate Cover
202446	Side Plate	285160	SPST Switch
202447	End Plate	285908	3/8"-16 x 2 1/4 Eye Bolt
202448	Base Plate		*N.S. - Not Shown